

## Product datasheet for **AP21201PU-M**

### NCAM2 Rabbit Polyclonal Antibody

#### Product data:

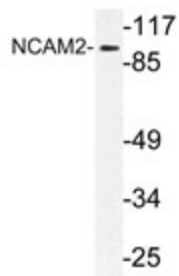
Product Type:	Primary Antibodies
Applications:	WB
Recommended Dilution:	<b>Western blot:</b> 1/500-1/1000.
Reactivity:	Human, Mouse, Rat
Host:	Rabbit
Clonality:	Polyclonal
Specificity:	This antibody detects endogenous levels of NCAM2 protein. (region surrounding Leu296)
Formulation:	Phosphate buffered saline (PBS), pH~7.2 State: Aff - Purified State: Liquid purified Ig fraction (> 95% pure by SDS-PAGE). Preservative: 0.05% Sodium Azide
Concentration:	1.0 mg/ml
Purification:	Affinity Chromatography using epitope-specific immunogen.
Conjugation:	Unconjugated
Storage:	Store undiluted at 2-8°C for one month or (in aliquots) at -20°C for longer. Avoid repeated freezing and thawing.
Stability:	Shelf life: one year from despatch.
Predicted Protein Size:	~100 kDa
Gene Name:	neural cell adhesion molecule 2
Database Link:	<a href="#">Entrez Gene 17968 Mouse</a> <a href="#">Entrez Gene 288280 Rat</a> <a href="#">Entrez Gene 4685 Human</a> <a href="#">O15394</a>
Background:	NCAM2 is a cell adhesion molecule belonging to the immunoglobulin superfamily. It is differentially expressed in the developing and mature olfactory epithelium and is involved in the guidance of developing olfactory sensory neurons to the glomeruli of the olfactory bulb.
Synonyms:	NCAM21, N-CAM 2
Protein Families:	Transmembrane



[View online »](#)

Protein Pathways: Cell adhesion molecules (CAMs), Prion diseases

## Product images:



Western blot (WB) analysis of NCAM2 antibody (Cat.-No.: [AP21201PU-N]) in extracts from HeLa cells.