

Product datasheet for **AP21200PU-N**

NCR3 Rabbit Polyclonal Antibody

Product data:

Product Type:	Primary Antibodies
Applications:	WB
Recommended Dilution:	Western blot: 1/500 - 1/1000.
Reactivity:	Human, Rat
Host:	Rabbit
Clonality:	Polyclonal
Specificity:	This detects endogenous levels of NKp30 protein.
Formulation:	Phosphate buffered saline (PBS), pH 7.2. State: Aff - Purified State: Liquid purified Ig fraction Preservative: 0.05% sodium azide
Concentration:	1.0 mg/ml
Purification:	Affinity chromatography using epitope-specific immunogen (> 95% pure by SDS-PAGE)
Conjugation:	Unconjugated
Storage:	Store undiluted at 2-8°C for one month or (in aliquots) at -20°C for longer. Avoid repeated freezing and thawing.
Stability:	Shelf life: one year from despatch.
Predicted Protein Size:	~ 30 kDa
Gene Name:	natural cytotoxicity triggering receptor 3
Database Link:	Entrez Gene 294251 Rat Entrez Gene 259197 Human O14931



[View online »](#)

Background:

The p30-15 monoclonal antibody recognizes CD337 also known as activating NK receptor NKp30 (NKp30), and natural cytotoxicity triggering receptor 3. NKp30 is a type I transmembrane protein, member of the natural cytotoxicity receptor family that contains one immunoglobulin-like domain. NKp30 has an apparent molecular weight of 30 kD and six isoforms are produced by alternative splicing. NKp30 is expressed on IL-2 activated NK cells and NK cell lines as well as some in vitro activated γ/δ T cells. NKp30 enhances NK cell triggering and cytolysis of tumor targets and other target cells deficient in MHC class I molecules. NKp30 has been shown to associate with CD59 and TCR ζ . The p30-15 antibody against human NKp30 has been shown to be useful for flow cytometry, stimulation of human NK cells via NKp30 in a redirected lysis assay, and blocking of NKp30 function in solution.

Synonyms:

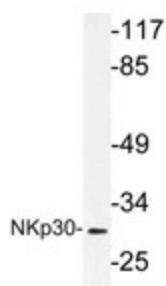
NKp30, NCR3, 1C7, LY117

Protein Families:

Druggable Genome, ES Cell Differentiation/IPS

Protein Pathways:

Natural killer cell mediated cytotoxicity

Product images:

Western blot (WB) analysis of NKp30 antibody (Cat.-No.: AP21200PU-N) in extracts from A549 cells.