

Product datasheet for **AP21199PU-N**

NCR1 Rabbit Polyclonal Antibody

Product data:

Product Type:	Primary Antibodies
Applications:	WB
Recommended Dilution:	Western blot: 1/500 - 1/1000.
Reactivity:	Human
Host:	Rabbit
Clonality:	Polyclonal
Specificity:	This antibody detects endogenous levels of CD335 / NKp46. (region surrounding Pro176)
Formulation:	Phosphate buffered saline (PBS), pH 7.2 State: Aff - Purified State: Liquid purified Ig fraction Preservative: 15 mM sodium azide
Concentration:	1.0 mg/ml
Purification:	Affinity chromatography using epitope-specific immunogen(> 95% pure by SDS-PAGE)
Conjugation:	Unconjugated
Storage:	Store undiluted at 2-8°C for one month or (in aliquots) at -20°C for longer. Avoid repeated freezing and thawing.
Stability:	Shelf life: one year from despatch.
Predicted Protein Size:	~ 38 kDa
Gene Name:	natural cytotoxicity triggering receptor 1
Database Link:	Entrez Gene 9437 Human O76036



[View online »](#)

Background:

NKp46 (lymphocyte antigen 94, LY94) is a natural cytotoxicity receptor that belongs to the immunoglobulin superfamily and is expressed by all resting or activated NK cells, but not on T cells or B cells. The NKp46 cDNA encodes a 304 amino acid type I transmembrane protein with an extracellular region preceded by a 21 residue signal peptide and two cysteine-bridged C2-type Ig-like domains. A stem connects the extracellular domain to a 19 amino acid, arginine containing-transmembrane domain. NKp46 is involved in natural cytotoxicity and is involved in the recognition and lysis of both human and murine tumor cells.

Synonyms:

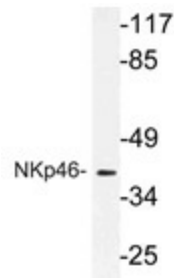
NCR1, LY94, NKp46

Protein Families:

Druggable Genome, Transmembrane

Protein Pathways:

Natural killer cell mediated cytotoxicity

Product images:

Western blot (WB) analysis of NKp46 antibody (Cat.-No.: AP21199PU-N) in extracts from A549 cells.