

Product datasheet for **AP21198PU-N**

ME1 Rabbit Polyclonal Antibody

Product data:

Product Type:	Primary Antibodies
Applications:	WB
Recommended Dilution:	Western blot: 1/500 - 1/1000.
Reactivity:	Human, Mouse, Rat
Host:	Rabbit
Clonality:	Polyclonal
Specificity:	This antibody detects endogenous levels of Malic enzyme 1 protein. (region surrounding Tyr500)
Formulation:	Phosphate buffered saline (PBS), pH 7.2 State: Aff - Purified State: Liquid purified Ig fraction Preservative: 0.05% sodium azide
Concentration:	1.0 mg/ml
Purification:	Affinity chromatography using epitope-specific immunogen (> 95% pure by SDS-PAGE)
Conjugation:	Unconjugated
Storage:	Store undiluted at 2-8°C for one month or (in aliquots) at -20°C for longer. Avoid repeated freezing and thawing.
Stability:	Shelf life: one year from despatch.
Predicted Protein Size:	~ 64 kDa
Gene Name:	malic enzyme 1
Database Link:	Entrez Gene 17436 Mouse Entrez Gene 24552 Rat Entrez Gene 4199 Human P48163



[View online »](#)

Background:

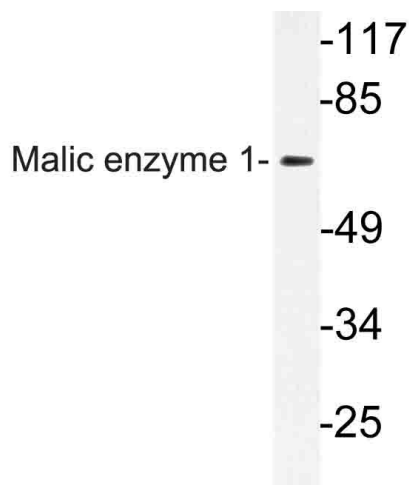
ME1 (Malic enzyme 1), also known as NADP-ME, MES or HUMNDME, is a 572 amino acid cytoplasmic protein that belongs to the malic enzyme family. Expressed ubiquitously with highest expression in liver and white adipose tissue, ME1 functions as an NADP-dependent enzyme that catalyzes the conversion of S-malate and NADP to pyruvate, carbon dioxide and NADPH (a reducing agent that participates in fatty acid biosynthesis). Through its ability to catalyze the reversible oxidative decarboxylation of malate, ME1 links the citric acid and glycolytic cycles. ME1 exists as a homotetramer that uses divalent metal cations, such as magnesium or manganese, as cofactors. The expression of ME1 is regulated by both thyroid hormone levels and the amount of carbohydrates in the diet, indicating that ME1 may play an important role as a housekeeping protein within the cell.

Synonyms:

ME1, NADP-dependent malic enzyme

Protein Pathways:

Metabolic pathways, PPAR signaling pathway, Pyruvate metabolism

Product images:

Western blot (WB) analysis of Malic enzyme 1 antibody in extracts from HeLa cells.