

## Product datasheet for **AP21197PU-N**

### PTGR1 Rabbit Polyclonal Antibody

#### Product data:

Product Type:	Primary Antibodies
Applications:	WB
Recommended Dilution:	<b>Western blot:</b> 1/500 - 1/1000.
Reactivity:	Human
Host:	Rabbit
Clonality:	Polyclonal
Specificity:	This antibody detects endogenous levels of LTB4DH protein. (region surrounding Leu105)
Formulation:	Phosphate buffered saline (PBS), pH 7.2 State: Aff - Purified State: Liquid purified Ig fraction Preservative: 0.05% sodium azide
Concentration:	1.0 mg/ml
Purification:	Affinity chromatography using epitope-specific immunogen (> 95% pure by SDS-PAGE)
Conjugation:	Unconjugated
Storage:	Store undiluted at 2-8°C for one month or (in aliquots) at -20°C for longer. Avoid repeated freezing and thawing.
Stability:	Shelf life: one year from despatch.
Predicted Protein Size:	~ 36 kDa
Gene Name:	prostaglandin reductase 1
Database Link:	<a href="#">Entrez Gene 22949 Human Q14914</a>
Background:	The NADP(H)-dependent enzyme leukotriene 12-hydroxy dehydrogenase (LTB4DH) catalyzes double bond reductions and oxo-reductions in lipoxins (15-oxo-lipoxin A 4 ), leukotrienes (leukotriene B 4 ) and E/F prostaglandins (15-oxo prostaglandins). The reactions mediated by LTB4DH constitute an important inactivation pathway for these key lipid mediators involved in inflammation. LTB4DH belongs to the medium-chain dehydrogenase/reductase enzyme family.

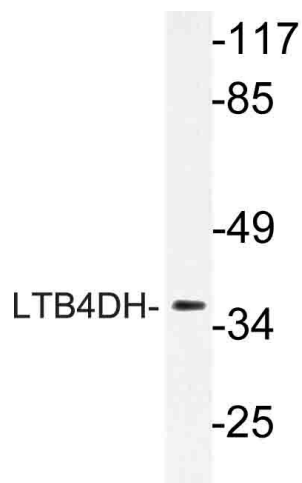


[View online »](#)

Synonyms: PTGR1, LTB4DH, PGR-1, PGR1

Protein Families: Druggable Genome

### Product images:



Western blot (WB) analysis of LTB4DH antibody (Cat.-No.: AP21197PU-N) in extracts from HT-29 cells.