

## Product datasheet for **AP21195PU-N**

### MDFI Rabbit Polyclonal Antibody

#### Product data:

Product Type:	Primary Antibodies
Applications:	WB
Recommended Dilution:	<b>Western blot:</b> 1/500 - 1/1000.
Reactivity:	Human, Mouse
Host:	Rabbit
Clonality:	Polyclonal
Specificity:	This antibody detects endogenous levels of MDFI protein. (region surrounding Pro134)
Formulation:	Phosphate buffered saline (PBS), pH 7.2 State: Aff - Purified State: Liquid purified Ig fraction Preservative: 0.05% sodium azide
Concentration:	1.0 mg/ml
Purification:	Affinity chromatography using epitope-specific immunogen (> 95% pure by SDS-PAGE)
Conjugation:	Unconjugated
Storage:	Store undiluted at 2-8°C for one month or (in aliquots) at -20°C for longer. Avoid repeated freezing and thawing.
Stability:	Shelf life: one year from despatch.
Predicted Protein Size:	~ 25 kDa
Gene Name:	MyoD family inhibitor
Database Link:	<a href="#">Entrez Gene 17240 Mouse</a> <a href="#">Entrez Gene 4188 Human</a> <a href="#">Q99750</a>
Background:	MDFI is a transcription factor that negatively regulates other myogenic family proteins. Studies of the mouse homolog, I-mf, show that it interferes with myogenic factor function by masking nuclear localization signals and preventing DNA binding. Knockout mouse studies show defects in the formation of vertebrae and ribs that also involve cartilage formation in these structures. MDFI also interfere with the DNA-binding activity of MyoD family members and plays an important role in trophoblast and chondrogenic differentiation.

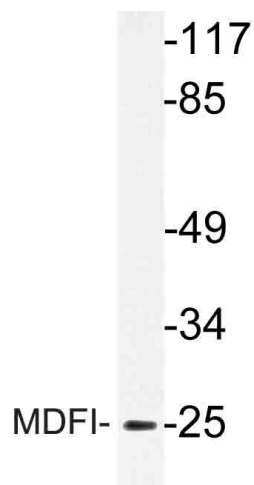


[View online »](#)

Synonyms: MyoD family inhibitor

Protein Families: Transcription Factors

**Product images:**



Western blot (WB) analysis of MDFI antibody (Cat.-No.: AP21195PU-N) in extracts from Jurkat cells.