

## Product datasheet for **AP21194PU-M**

### MRPS36 Rabbit Polyclonal Antibody

#### Product data:

Product Type:	Primary Antibodies
Applications:	IHC, WB
Recommended Dilution:	<b>Western blot:</b> 1/500 - 1/1000. <b>Immunohistochemistry on paraffin sections:</b> 1/50 - 1/200.
Reactivity:	Human
Host:	Rabbit
Clonality:	Polyclonal
Specificity:	This antibody detects endogenous levels of MRP-S36 protein. (region surrounding Val36)
Formulation:	Phosphate buffered saline (PBS), pH 7.2 State: Aff - Purified State: Liquid purified Ig fraction Preservative: 0.05% sodium azide
Concentration:	1.0 mg/ml
Purification:	Affinity chromatography using epitope-specific immunogen (> 95% pure by SDS-PAGE)
Conjugation:	Unconjugated
Storage:	Store undiluted at 2-8°C for one month or (in aliquots) at -20°C for longer. Avoid repeated freezing and thawing.
Stability:	Shelf life: one year from despatch.
Predicted Protein Size:	~ 15 kDa
Gene Name:	mitochondrial ribosomal protein S36
Database Link:	<a href="#">Entrez Gene 92259 Human P82909</a>



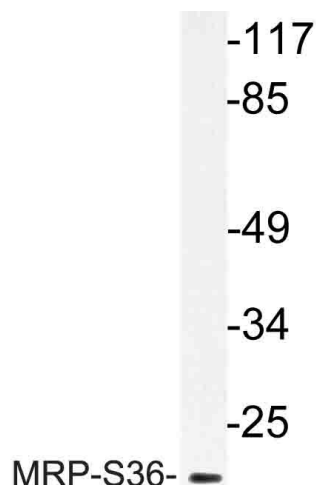
[View online »](#)

**Background:**

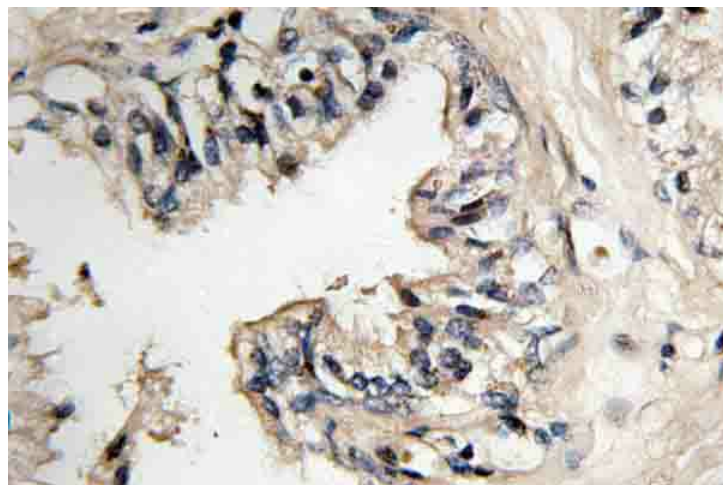
Mitochondrial ribosomes consist of a large 39S subunit and a small 28S subunit, both of which are comprised of multiple mitochondrial ribosomal proteins (MRPs) that are encoded by nuclear genes and are essential for protein synthesis within mitochondria. MRP-S36 (mitochondrial ribosomal protein S36), is a 103 amino acid protein that localizes to the mitochondrion, where it exists as a component of the 28S ribosomal subunit and works in conjunction with other MRPs to mediate protein synthesis. The gene encoding MRP-S36 maps to human chromosome 5, which contains 181 million base pairs and comprises nearly 6% of the human genome. Deletion of the p arm of chromosome 5 leads to Cri du chat syndrome, while deletion of the q arm or of chromosome 5 altogether is common in therapy-related acute myelogenous leukemias and myelodysplastic syndrome.

**Synonyms:**

S36mt, DC47

**Product images:**


Western blot (WB) analysis of MRP-S36 antibody (Cat.-No.: [AP21194PU-N]) in extracts from HepG2 cells.



Immunohistochemistry (IHC) analysis of MRP-S36 antibody (Cat.-No.: [AP21194PU-N]) in paraffin-embedded human prostate carcinoma tissue.