

Product datasheet for **AP21193PU-M**

MRPS25 Rabbit Polyclonal Antibody

Product data:

Product Type:	Primary Antibodies
Applications:	WB
Recommended Dilution:	Western blot: 1/500 - 1/1000.
Reactivity:	Human, Mouse, Rat
Host:	Rabbit
Clonality:	Polyclonal
Specificity:	This antibody detects endogenous levels of MRP-S25 protein. (region surrounding Lys168)
Formulation:	Phosphate buffered saline (PBS), pH 7.2 State: Aff - Purified State: Liquid purified Ig fraction Preservative: 0.05% sodium azide
Concentration:	1.0 mg/ml
Purification:	Affinity chromatography using epitope-specific immunogen (> 95% pure by SDS-PAGE)
Conjugation:	Unconjugated
Storage:	Store undiluted at 2-8°C for one month or (in aliquots) at -20°C for longer. Avoid repeated freezing and thawing.
Stability:	Shelf life: one year from despatch.
Predicted Protein Size:	~ 20 kDa
Gene Name:	mitochondrial ribosomal protein S25
Database Link:	Entrez Gene 64658 Mouse Entrez Gene 297459 Rat Entrez Gene 64432 Human P82663

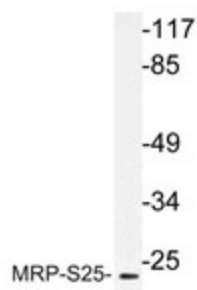
[View online »](#)

Background:

Mammalian mitochondrial ribosomes (mitoribosomes) are responsible for protein synthesis within the mitochondrion. The mitoribosomes are composed of a 4:1 ratio of protein to RNA, with the proteins forming two subunits, the 28S subunit and the 39S subunit. Across species, the proteins that make up the mitoribosome subunits vary greatly in sequence, preventing easy recognition by sequence homology. MRP-S25 (mitochondrial 28S ribosomal protein S25), also known as S25mt, is a 173 amino acid mitochondrial ribosomal protein belonging to the ribosomal protein S25/L51 family. Localized to mitochondria, MRP-S25 is present in the 28S subunit of the mitoribosomes.

Synonyms:

S25mt, RPMS25, MRP-S25

Product images:


Western blot (WB) analysis of MRP-S25 antibody (Cat.-No.: [AP21193PU-N]) extracts from 293 cells.