

## Product datasheet for **AP21189PU-S**

### HFE Rabbit Polyclonal Antibody

#### Product data:

Product Type:	Primary Antibodies
Applications:	WB
Recommended Dilution:	<b>Western blot:</b> 1/500 - 1/1000.
Reactivity:	Human
Host:	Rabbit
Clonality:	Polyclonal
Specificity:	This antibody detects endogenous levels of HLA-H protein. (region surrounding Ile104)
Formulation:	Phosphate buffered saline (PBS), pH 7.2 State: Aff - Purified State: Liquid purified Ig fraction Preservative: 0.05% Sodium Azide
Concentration:	1.0 mg/ml
Purification:	Affinity chromatography using epitope-specific immunogen (> 95% pure by SDS-PAGE)
Conjugation:	Unconjugated
Storage:	Store undiluted at 2-8°C for one month or (in aliquots) at -20°C for longer. Avoid repeated freezing and thawing.
Stability:	Shelf life: one year from despatch.
Predicted Protein Size:	~ 40 kDa
Gene Name:	hemochromatosis
Database Link:	<a href="#">Entrez Gene 3077 Human Q30201</a>



[View online »](#)

**Background:**

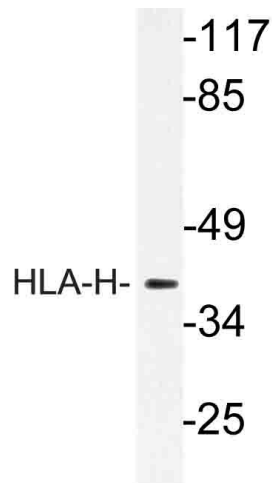
The protein encoded by this gene is a membrane protein that is similar to MHC class I-type proteins and associates with beta2-microglobulin (beta2M). It is thought that this protein functions to regulate iron absorption by regulating the interaction of the transferrin receptor with transferrin. The iron storage disorder, hereditary haemochromatosis, is a recessive genetic disorder that results from defects in this gene. At least nine alternatively spliced variants have been described for this gene. Additional variants have been found but their full-length nature has not been determined.

**Synonyms:**

dj221C16.10.1; hemochromatosis; HFE1; HH; HLA-H; HLAH; MGC103790; MVCD7

**Protein Families:**

Druggable Genome, Transmembrane

**Product images:**

Western blot (WB) analysis of HLA-H antibody (Cat.-No.: [AP21189PU-N]) in extracts from LOVO cells.