

Product datasheet for **AP21188PU-N**

AGFG2 Rabbit Polyclonal Antibody

Product data:

Product Type:	Primary Antibodies
Applications:	WB
Recommended Dilution:	Western blot: 1/500-1/1000.
Reactivity:	Human, Mouse
Host:	Rabbit
Clonality:	Polyclonal
Specificity:	This antibody detects endogenous levels of Rabr protein. (region surrounding Val131)
Formulation:	Phosphate buffered saline (PBS), pH~7.2 State: Aff - Purified State: Liquid purified Ig fraction (> 95% pure by SDS-PAGE). Preservative: 0.05% Sodium Azide
Concentration:	1.0 mg/ml
Purification:	Affinity Chromatography using epitope-specific immunogen.
Conjugation:	Unconjugated
Storage:	Store undiluted at 2-8°C for one month or (in aliquots) at -20°C for longer. Avoid repeated freezing and thawing.
Stability:	Shelf life: one year from despatch.
Predicted Protein Size:	~ 49 kDa
Gene Name:	ArfGAP with FG repeats 2
Database Link:	Entrez Gene 231801 Mouse Entrez Gene 3268 Human O95081



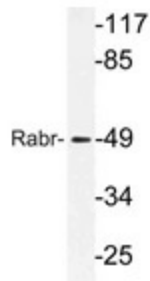
[View online »](#)

Background:

Rabr, also known as AGFG2 (Arf-GAP domain and FG repeats-containing protein 2), is a 481 amino acid member of the HIV-1 REV binding protein (HRB) family and has one Arf-GAP zinc finger domain, several phe-gly (FG) motifs, and four asn-pro-phe (NPF) motifs. Rabr shares 46% identity with Rab. Both Rab and Rabr contain a zinc finger region near the N terminus, several phe-gly (FG) motifs, which is characteristic of nucleoporin-like proteins, and four NPF motifs located in the C-terminal region. Rabr interacts with Eps15 homology (EH) domains and plays a role in the REV export pathway, which mediates the nucleocytoplasmic transfer of proteins and RNAs.

Synonyms:

HIV-1 Rev-binding protein-like protein, RABR

Product images:

Western blot (WB) analysis of Rabr antibody (Cat.-No.: AP21188PU-N) in extracts from MCF-7 cells.