

Product datasheet for **AP21187PU-M**

GNAT2 Rabbit Polyclonal Antibody

Product data:

Product Type:	Primary Antibodies
Applications:	IHC, WB
Recommended Dilution:	Western blot: 1/500 - 1/1000. Immunohistochemistry on paraffin sections: 1/50 - 1/200.
Reactivity:	Human, Mouse
Host:	Rabbit
Clonality:	Polyclonal
Specificity:	This antibody detects endogenous levels of Gα t2 protein. (region surrounding Val34)
Formulation:	Phosphate buffered saline (PBS), pH 7.2 State: Aff - Purified State: Liquid purified Ig fraction Preservative: 0.05% sodium azide
Concentration:	1.0 mg/ml
Purification:	Affinity chromatography using epitope-specific immunogen (> 95% pure by SDS-PAGE)
Conjugation:	Unconjugated
Storage:	Store undiluted at 2-8°C for one month or (in aliquots) at -20°C for longer. Avoid repeated freezing and thawing.
Stability:	Shelf life: one year from despatch.
Predicted Protein Size:	~ 40 kDa
Gene Name:	G protein subunit alpha transducin 2
Database Link:	<u>Entrez Gene 14686 Mouse</u> <u>Entrez Gene 2780 Human</u> <u>P19087</u>



[View online »](#)

Background:

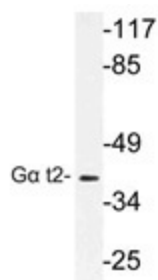
GGH (gamma-glutamyl hydrolase), also known as GH or gamma-glu-X carboxypeptidase, is a 318 amino acid protein that is secreted into the extracellular space and is also localized to both the lysosome and the melanosome. Functioning as a hydrolase, GGH contains one gamma-glutamyl hydrolase domain through which it catalyzes the hydrolysis of polyglutamate sidechains from pteroylpolyglutamates, specifically hydrolyzing gamma-glutamyl bonds. Via its catalytic activity, GGH may play a role in the bioavailability and metabolic activity of pteroylpolyglutamates. Polymorphisms in the gene encoding GGH are associated with rheumatoid arthritis, inflammatory bowel disease and various cancers. The gene encoding GGH maps to human chromosome 8, which consists of nearly 146 million base pairs, houses more than 800 genes and is associated with a variety of diseases and malignancies.

Synonyms:

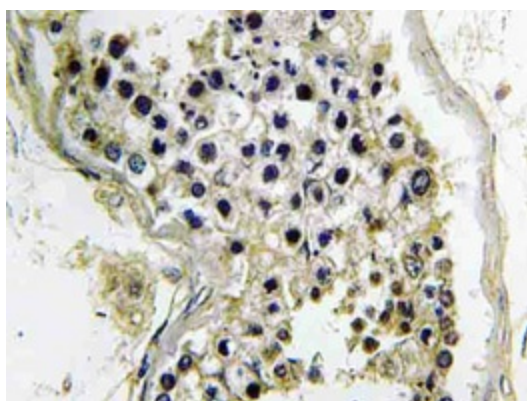
G protein G(t) subunit alpha-2, Transducin alpha-2 chain

Protein Families:

Druggable Genome

Product images:


Western blot (WB) analysis of Ga t2 antibody (Cat.-No.: [AP21187PU-N]) in extracts from COLO cells.



Immunohistochemistry (IHC) analyzes of Gat2 antibody (Cat.-No.: [AP21187PU-N]) in paraffin-embedded human testis tissue.