

Product datasheet for **AP21186PU-N**

GAS1 Rabbit Polyclonal Antibody

Product data:

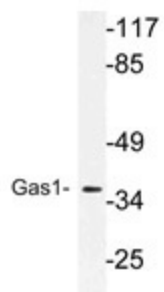
Product Type:	Primary Antibodies
Applications:	WB
Recommended Dilution:	Western blot: 1/500-1/1000.
Reactivity:	Human, Mouse
Host:	Rabbit
Clonality:	Polyclonal
Specificity:	This antibody detects endogenous levels of Gas1 protein. (region surrounding Arg274)
Formulation:	Phosphate buffered saline (PBS), pH~7.2 State: Aff - Purified State: Liquid purified Ig fraction (> 95% pure by SDS-PAGE). Preservative: 0.05% Sodium Azide
Concentration:	1.0 mg/ml
Purification:	Affinity Chromatography using epitope-specific immunogen.
Conjugation:	Unconjugated
Storage:	Store undiluted at 2-8°C for one month or (in aliquots) at -20°C for longer. Avoid repeated freezing and thawing.
Stability:	Shelf life: one year from despatch.
Predicted Protein Size:	~ 36 kDa
Gene Name:	growth arrest specific 1
Database Link:	Entrez Gene 14451 Mouse Entrez Gene 2619 Human P54826
Background:	Growth arrest specific proteins, including Gas1 and Gas6, are activated in quiescent cells. Gas 1-induced growth arrest is mediated by p53, and Gas1 appears to be able to suppress tumor cell growth. Gas6, a ligand for the tyrosine kinase receptor Axl, was initially identified as a member of the vitamin K-dependent protein family and exhibits a high degree of amino acid sequence homology to protein S, a negative co-regulator in the coagulation pathway.
Synonyms:	Growth arrest-specific protein 1, GAS-1



[View online »](#)

Protein Pathways: Hedgehog signaling pathway

Product images:



Western blot (WB) analysis of Gas1 antibody (Cat.-No.: AP21186PU-N) in extracts from MCF-7 cells.