

## Product datasheet for **AP21184PU-M**

### GRB2 Rabbit Polyclonal Antibody

#### Product data:

Product Type:	Primary Antibodies
Applications:	WB
Recommended Dilution:	<b>Western blot:</b> 1/500 - 1/1000.
Reactivity:	Human, Mouse, Rat
Host:	Rabbit
Clonality:	Polyclonal
Specificity:	This antibody detects endogenous levels of GRB2 protein. (region surrounding Arg178)
Formulation:	Phosphate buffered saline (PBS), pH 7.2 State: Aff - Purified State: Liquid purified Ig fraction Preservative: 0.05% sodium azide
Concentration:	1.0 mg/ml
Purification:	Affinity chromatography using epitope-specific immunogen (> 95% pure by SDS-PAGE)
Conjugation:	Unconjugated
Storage:	Store undiluted at 2-8°C for one month or (in aliquots) at -20°C for longer. Avoid repeated freezing and thawing.
Stability:	Shelf life: one year from despatch.
Predicted Protein Size:	~ 32 kDa
Gene Name:	growth factor receptor bound protein 2
Database Link:	<a href="#">Entrez Gene 14784 Mouse</a> <a href="#">Entrez Gene 81504 Rat</a> <a href="#">Entrez Gene 2885 Human</a> <a href="#">P62993</a>



[View online »](#)

**Background:**

Growth factor receptor bound protein 2 (GRB2), also known as Ash protein, is a 24 kDa protein that contains a central Src homology (SH2) domain flanked by two SH3 domains. GRB2 is believed to be a regulatory subunit of signaling molecules whose activity is modulated by receptor binding. GRB2 associates with activated (tyrosine phosphorylated) EGFR and PDGFR via its SH2 domain as well as IRS1, SHC, and LNK through SH2 and SH3 domains. The SH3 domain binds to SOS, a guanine nucleotide exchange factor for Ras proteins. Endocytosis of activated EGFR requires the interaction of GRB2 with the GTP binding protein dynamin, a factor essential to the formation of endocytotic vesicle. It is ubiquitously expressed and several isoforms are produced by alternative splicing. On SDS PAGE, GRB2 has an apparent molecular weight of 28 kDa.

**Synonyms:**

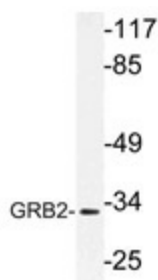
Growth factor receptor-bound protein 2

**Protein Families:**

Druggable Genome

**Protein Pathways:**

Acute myeloid leukemia, B cell receptor signaling pathway, Chemokine signaling pathway, Chronic myeloid leukemia, Colorectal cancer, Dorso-ventral axis formation, Endometrial cancer, ErbB signaling pathway, Fc epsilon RI signaling pathway, Focal adhesion, Gap junction, Glioma, GnRH signaling pathway, Insulin signaling pathway, Jak-STAT signaling pathway, MAPK signaling pathway, Natural killer cell mediated cytotoxicity, Neurotrophin signaling pathway, Non-small cell lung cancer, Pathways in cancer, Prostate cancer, Renal cell carcinoma, T cell receptor signaling pathway

**Product images:**


Western blot (WB) analysis of GRB2 antibody (Cat.-No.: [AP21184PU-N]) in extracts from Jurkat cells.