

Product datasheet for **AP21180PU-N**

TSTA3 Rabbit Polyclonal Antibody

Product data:

Product Type:	Primary Antibodies
Applications:	WB
Recommended Dilution:	Western blot: 1/500 - 1/1000.
Reactivity:	Human, Mouse, Rat
Host:	Rabbit
Clonality:	Polyclonal
Specificity:	This antibody detects endogenous levels of FX protein.
Formulation:	Phosphate buffered saline (PBS), pH 7.2 State: Aff - Purified State: Liquid purified Ig fraction Preservative: 0.05% sodium azide
Concentration:	1.0 mg/ml
Purification:	Affinity-chromatography using epitope-specific immunogen and the purity is > 95% (by SDS-PAGE)
Conjugation:	Unconjugated
Storage:	Store undiluted at 2-8°C for one month or (in aliquots) at -20°C for longer. Avoid repeated freezing and thawing.
Stability:	Shelf life: one year from despatch.
Predicted Protein Size:	~ 40 kDa
Gene Name:	tissue specific transplantation antigen P35B
Database Link:	Entrez Gene 22122 Mouse Entrez Gene 300036 Rat Entrez Gene 7264 Human Q13630



[View online »](#)

Background:

GDP-L-fucose synthetase (FX protein), also designated Tissue-specific transplantation antigen P35B or GDP-keto-6-deoxymannose 3,5-epimerase, 4-reductase, belongs to the fucose synthetase family. FX is a red cell NADP(H)- binding protein that is important in leukocyte adhesion and trafficking processes. The FX protein, together with GDP-mannose 4,6-dehydratase, can convert GDP-mannose to GDP-L-fucose by catalyzing the two-step epimerase and reductase reactions. GDP-L-fucose is the substrate of several fucosyltransferases that function in the expression of many glycoconjugates such as blood group ABH antigens and developmental adhesion antigens. Defects in the gene encoding for the FX protein cause leukocyte adhesion deficiency (LAD).

Synonyms:

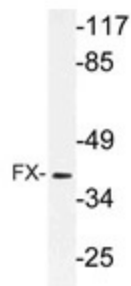
GDP-L-fucose synthetase, SDR4E1

Protein Families:

Druggable Genome

Protein Pathways:

Amino sugar and nucleotide sugar metabolism, Fructose and mannose metabolism, Metabolic pathways

Product images:

Western blot (WB) analysis of FX antibody (Cat.-No.: AP21180PU-N) in extracts from rat muscle cells.