

## Product datasheet for **AP21178PU-M**

### IFI16 Rabbit Polyclonal Antibody

#### Product data:

Product Type:	Primary Antibodies
Applications:	WB
Recommended Dilution:	<b>Western blot:</b> 1/500 - 1/1000.
Reactivity:	Human
Host:	Rabbit
Clonality:	Polyclonal
Specificity:	This antibody detects endogenous levels of IFI-16 protein. (region surrounding asn772)
Formulation:	Phosphate buffered saline (PBS), pH 7.2 State: Aff - Purified State: Liquid purified Ig fraction Preservative: 0.05% sodium azide
Concentration:	1.0 mg/ml
Purification:	Affinity-chromatography using epitope-specific immunogen and the purity is > 95% (by SDS-PAGE)
Conjugation:	Unconjugated
Storage:	Store undiluted at 2-8°C for one month or (in aliquots) at -20°C for longer. Avoid repeated freezing and thawing.
Stability:	Shelf life: one year from despatch.
Predicted Protein Size:	~ 88 kDa
Gene Name:	interferon gamma inducible protein 16
Database Link:	<a href="#">Entrez Gene 3428 Human</a> <a href="#">Q16666</a>

[View online »](#)

**Background:**

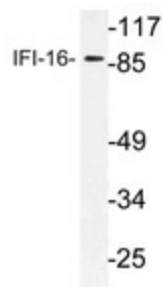
Interferon-gamma inducible protein 16 (IFI16) belongs to the HIN-200 family of transcriptional regulator linked to cell cycle regulation and differentiation by modulating the activities of multiple transcriptional factors, such as p53 and Rb. The HIN-200 (hematopoietic interferon-inducible nuclear antigens with 200 amino acid repeat) family members contain a DNA binding domain, a transcriptional regulatory domain, DAPIN/PAAD domain associated with interferon response and a binding domain for BRCA1. IFI16 may have a role in the regulation of hematopoietic cell differentiation and also be involved in DNA repair since it becomes a component of the DNA repair multi-protein BASC complex after UV-induced DNA damage. IFI16 is strongly induced by gamma interferon in vivo.

**Synonyms:**

IFI-16

**Protein Families:**

Transcription Factors

**Product images:**


Western blot (WB) analysis of IFI-16 antibody (Cat.-No.: [AP21178PU-N]) in extracts from HepG2 cells.