

## Product datasheet for **AP21177PU-N**

### GGH Rabbit Polyclonal Antibody

#### Product data:

Product Type:	Primary Antibodies
Applications:	WB
Recommended Dilution:	<b>Western blot:</b> 1/500 - 1/1000.
Reactivity:	Human
Host:	Rabbit
Clonality:	Polyclonal
Specificity:	This antibody detects endogenous levels of GGH protein. (region surrounding Lys287)
Formulation:	Phosphate buffered saline (PBS), pH 7.2 State: Aff - Purified State: Liquid purified Ig fraction Preservative: 0.05% sodium azide
Concentration:	1.0 mg/ml
Purification:	Affinity-chromatography using epitope-specific immunogen and the purity is > 95% (by SDS-PAGE)
Conjugation:	Unconjugated
Storage:	Store undiluted at 2-8°C for one month or (in aliquots) at -20°C for longer. Avoid repeated freezing and thawing.
Stability:	Shelf life: one year from despatch.
Predicted Protein Size:	~ 36 kDa
Gene Name:	gamma-glutamyl hydrolase
Database Link:	<a href="#">Entrez Gene 8836 Human Q92820</a>



[View online »](#)

**Background:**

GGH (gamma-glutamyl hydrolase), also known as GH or Gamma-Glu-X carboxypeptidase, is a 318 amino acid protein that is secreted into the extracellular space and is also localized to both the lysosome and the melanosome. Functioning as a hydrolase, GGH contains one gamma-glutamyl hydrolase domain through which it catalyzes the hydrolysis of polyglutamate sidechains from pteroylpolyglutamates, specifically hydrolyzing gamma-glutamyl bonds. Via its catalytic activity, GGH may play a role in the bioavailability and metabolic activity of pteroylpolyglutamates. Polymorphisms in the gene encoding GGH are associated with rheumatoid arthritis, inflammatory bowel disease and various cancers.

**Synonyms:**

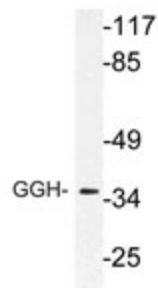
Conjugase, GH

**Protein Families:**

Druggable Genome, Protease, Secreted Protein

**Protein Pathways:**

Folate biosynthesis

**Product images:**

Western blot (WB) analysis of GGH antibody (Cat.-No.: AP21177PU-N) in extracts from RAW264.7 cells.