

Product datasheet for **AP21174PU-N**

Folate Binding Protein (FOLR1) Rabbit Polyclonal Antibody

Product data:

Product Type:	Primary Antibodies
Applications:	WB
Recommended Dilution:	Western blot: 1/500 - 1/1000.
Reactivity:	Human, Mouse, Rat
Host:	Rabbit
Clonality:	Polyclonal
Specificity:	This antibody detects endogenous levels of FR- α (Y80) protein. (region surrounding Tyr80)
Formulation:	Phosphate buffered saline (PBS), pH 7.2 State: Aff - Purified State: Liquid purified Ig fraction Preservative: 0.05% sodium azide
Concentration:	1.0 mg/ml
Purification:	Affinity-chromatography using epitope-specific immunogen and the purity is > 95% (by SDS-PAGE)
Conjugation:	Unconjugated
Storage:	Store undiluted at 2-8°C for one month or (in aliquots) at -20°C for longer. Avoid repeated freezing and thawing.
Stability:	Shelf life: one year from despatch.
Predicted Protein Size:	~ 34 kDa
Gene Name:	folate receptor 1 (adult)
Database Link:	<u>Entrez Gene 14275 Mouse</u> <u>Entrez Gene 171049 Rat</u> <u>Entrez Gene 2348 Human</u> <u>P15328</u>

[View online »](#)

Background:

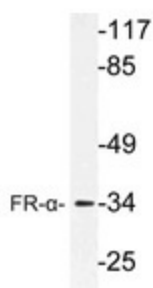
Folate is an essential vitamin that must be obtained from food intake through intestinal absorption in mammals. Folate and reduced folic acid derivatives bind to the folate receptor (FR) family, which mediates the endocytosis of 5-methyltetrahydrofolate into the cell. The folate receptors consist of five members, α , β , γ , γ' (which is produced by alternative splicing) and δ . β -FR is attached to the membrane by a GPI anchor and is expressed in malignant tissues of epithelial and nonepithelial origin. γ -FR is expressed in tissues of hematopoietic origin, such as spleen, thymus and bone marrow. The expression pattern of δ -FR is elusive, which suggests that it is highly restricted both spatially and temporally. The α isoform of the folate receptor is used as a highly selective tumor marker and may be targeted for the delivery of therapeutic compounds to tumor cells by coupling to derivatives of folic acid.

Synonyms:

FR-alpha, Folate receptor 1, MOV18, KB cells FBP, FOLR1, FOLR

Protein Families:

Druggable Genome, Secreted Protein, Transmembrane

Product images:


Western blot (WB) analysis of FR-alpha antibody (Cat. No.: AP21174PU-N) in extracts from HUVEC cells.