

## Product datasheet for **AP21169PU-N**

### TESK1 Rabbit Polyclonal Antibody

#### Product data:

Product Type:	Primary Antibodies
Applications:	WB
Recommended Dilution:	<b>Western blot:</b> 1/500 - 1/1000.
Reactivity:	Human, Mouse, Rat
Host:	Rabbit
Clonality:	Polyclonal
Specificity:	This antibody detects endogenous levels of TESK1 protein. (region surrounding Val217)
Formulation:	Phosphate buffered saline (PBS), pH 7.2 State: Aff - Purified State: Liquid purified Ig fraction Preservative: 0.05% sodium azide
Concentration:	1.0 mg/ml
Purification:	Affinity chromatography using epitope-specific immunogen and the purity is > 95% (by SDS-PAGE)
Conjugation:	Unconjugated
Storage:	Store undiluted at 2-8°C for one month or (in aliquots) at -20°C for longer. Avoid repeated freezing and thawing.
Stability:	Shelf life: one year from despatch.
Predicted Protein Size:	~ 68 kDa
Gene Name:	testis-specific kinase 1
Database Link:	<a href="#">Entrez Gene 21754 Mouse</a> <a href="#">Entrez Gene 29460 Rat</a> <a href="#">Entrez Gene 7016 Human Q15569</a>
Background:	TESK1 (Testis-specific kinase 1) belongs to the serine/threonine protein kinase family. It is a dual specificity protein kinase, catalyzing autophosphorylation and phosphorylation of exogenous substrates on both serine/threonine and tyrosine residues. The testicular germ cell-specific expression and developmental pattern of expression suggests a central role at and after the meiotic phase of spermatogenesis.

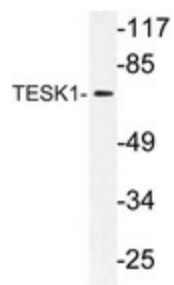


[View online »](#)

**Synonyms:** Testicular protein kinase 1

**Protein Families:** Druggable Genome, Protein Kinase

**Product images:**



Western blot (WB) analysis of TESK1 antibody (Cat.-No.: AP21169PU-N) in extracts from rat liver cells.