

Product datasheet for **AP21164PU-S**

PRIM1 Rabbit Polyclonal Antibody

Product data:

| | |
|-------------------------|---|
| Product Type: | Primary Antibodies |
| Applications: | IHC, WB |
| Recommended Dilution: | Western blot: 1/500 - 1/1000. Immunohistochemistry on paraffin sections 1/50 - 1/200. |
| Reactivity: | Human, Mouse, Rat |
| Host: | Rabbit |
| Clonality: | Polyclonal |
| Specificity: | This antibody detects endogenous levels of PRIM1 protein. (region surrounding Lys413) |
| Formulation: | Phosphate buffered saline (PBS), pH 7.2 State: Aff - Purified State: Liquid purified Ig fraction Preservative: 15 mM sodium azide |
| Concentration: | 1.0 mg/ml |
| Purification: | Affinity chromatography using epitope-specific immunogen and the purity is > 95% (by SDS-PAGE) |
| Conjugation: | Unconjugated |
| Storage: | Store undiluted at 2-8°C for one month or (in aliquots) at -20°C for longer. Avoid repeated freezing and thawing. |
| Stability: | Shelf life: one year from despatch. |
| Predicted Protein Size: | ~ 50 kDa |
| Gene Name: | primase (DNA) subunit 1 |
| Database Link: | Entrez Gene 19075 Mouse Entrez Gene 246327 Rat Entrez Gene 5557 Human P49642 |



[View online »](#)

Background:

The replication of DNA in eukaryotic cells is carried out by a complex chromosomal replication apparatus, in which DNA polymerase alpha and primase are two key enzymatic components. Primase, which is a heterodimer of a small subunit and a large subunit, synthesizes small RNA primers for the Okazaki fragments made during discontinuous DNA replication. PRIM1 is the small, 49 kDa primase subunit. The replication of DNA in eukaryotic cells is carried out by a complex chromosomal replication apparatus, in which DNA polymerase alpha and primase are two key enzymatic components. Primase, which is a heterodimer of a small subunit and a large subunit, synthesizes small RNA primers for the Okazaki fragments made during discontinuous DNA replication. The protein encoded by this gene is the small, 49 kDa primase subunit.

Synonyms:

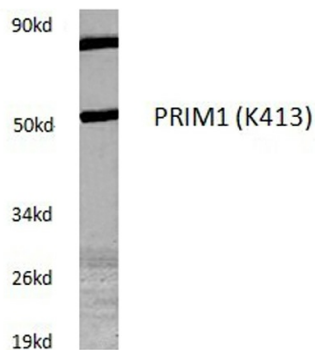
PRIM1, DNA primase 49 kDa subunit

Protein Families:

Druggable Genome

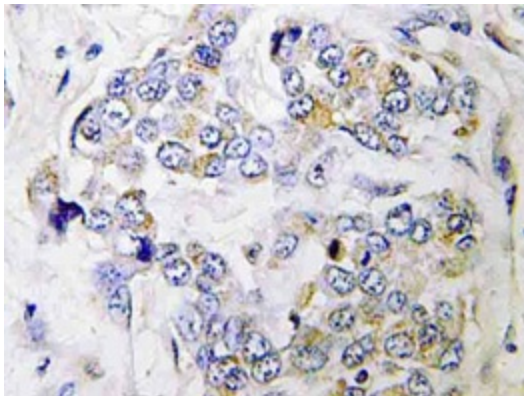
Protein Pathways:

DNA replication, Metabolic pathways, Purine metabolism, Pyrimidine metabolism

Product images:

Raw264.7 whole cell lysate, treated with LPS
PRIM1 (K413) pAb at 1:500 dilution

Western blot (WB) analysis of PRIM1 antibody (Cat.-No.: [AP21164PU-N]) in extracts from Raw264.7 cells, treated with LPS.



Immunohistochemistry (IHC) analyzes of PRIM1 antibody (Cat.-No.: [AP21164PU-N]) in paraffin-embedded human breast carcinoma tissue.