

Product datasheet for **AP21162PU-N**

CRMP3 (DPYSL4) Rabbit Polyclonal Antibody

Product data:

Product Type:	Primary Antibodies
Applications:	WB
Recommended Dilution:	Western blot: 1/500 - 1/1000.
Reactivity:	Human, Mouse, Rat
Host:	Rabbit
Clonality:	Polyclonal
Specificity:	This antibody detects endogenous levels of CRMP-3 protein. (region surrounding Cys132)
Formulation:	Phosphate buffered saline (PBS), pH 7.2. State: Aff - Purified State: Liquid purified Ig fraction Preservative: 15 mM sodium azide
Concentration:	1.0 mg/ml
Purification:	Affinity chromatography (> 95% (by SDS-PAGE)
Conjugation:	Unconjugated
Storage:	Store the antibody undiluted at 2-8°C for one month or (in aliquots) at -20°C for longer. Avoid repeated freezing and thawing.
Stability:	Shelf life: one year from despatch.
Predicted Protein Size:	~ 50 kDa
Gene Name:	dihydropyrimidinase like 4
Database Link:	Entrez Gene 25417 Rat Entrez Gene 26757 Mouse Entrez Gene 10570 Human O14531



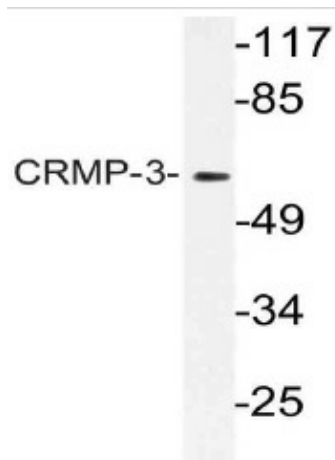
[View online »](#)

Background:

Collapsin response mediator proteins (CRMPs), including CRMP-1 (DRP-1), CRMP-2 (DRP-2 or TOAD64), CRMP-3 (DRP-4), CRMP-4 (DRP-3) and CRMP-5 (DRP-5), mediate signal transduction after exposure of neural cells to the axon guidance molecule Semaphorin 3A (SEMA3A)/collapsin. CRMPs are present in the developing cerebral cortex and neocortical neurons and are responsive to Semaphorin 3A. In the adult brain, the expression of CRMPs is dramatically downregulated. However, they remain expressed in structures that retain their capacity for differentiation and plasticity. CRMP-3 is expressed transiently in developing spinal cord and selectively in the postnatal cerebellum. It is cleaved by Calpain to produce a p54 N-terminal fragment. This cleavage product translocates to the nucleus and induces neuronal death in response to excitotoxicity and cerebral ischemia.

Synonyms:

DRP-4, UNC33-like phosphoprotein 4, ULIP4

Product images:

Western blot (WB) analysis of CRMP-3 antibody (Cat.-No.: AP21162PU-N) in extracts from HT-29 cells.