

## Product datasheet for **AP21161PU-S**

### Desmoglein 2 (DSG2) Rabbit Polyclonal Antibody

#### Product data:

Product Type:	Primary Antibodies
Applications:	WB
Recommended Dilution:	<b>Western blot:</b> 1/500 - 1/1000.
Reactivity:	Human
Host:	Rabbit
Clonality:	Polyclonal
Specificity:	This antibody detects endogenous levels of Dsg2 protein. (region surrounding Val440)
Formulation:	Phosphate buffered saline (PBS), pH 7.2. State: Aff - Purified State: Liquid purified Ig fraction Preservative: 0.05% sodium azide
Concentration:	1.0 mg/ml
Purification:	Affinity chromatography (> 95% (by SDS-PAGE)
Conjugation:	Unconjugated
Storage:	Store undiluted at 2-8°C for one month or (in aliquots) at -20°C for longer. Avoid repeated freezing and thawing.
Stability:	Shelf life: one year from despatch.
Predicted Protein Size:	~ 140 kDa
Gene Name:	desmoglein 2
Database Link:	<a href="#">Entrez Gene 1829 Human Q14126</a>



[View online »](#)

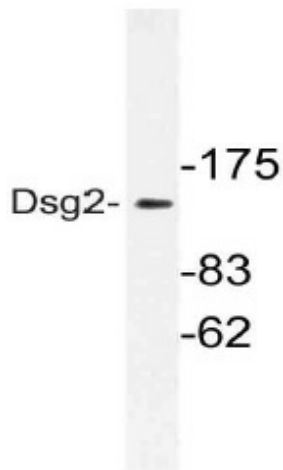
**Background:** Desmosomes are cell-cell junctions between epithelial, myocardial, and certain other cell types. Desmoglein 2 is a calcium-binding transmembrane glycoprotein component of desmosomes in vertebrate epithelial cells. Currently, three desmoglein subfamily members have been identified and all are members of the cadherin cell adhesion molecule superfamily. These desmoglein gene family members are located in a cluster on chromosome 18. This second family member is expressed in colon, colon carcinoma, and other simple and stratified epithelial-derived cell lines.

**Synonyms:** DSG2, CDHF5, HDGC

**Protein Families:** Transmembrane

**Protein Pathways:** Arrhythmogenic right ventricular cardiomyopathy (ARVC)

**Product images:**



Western blot (WB) analysis of Dsg2 antibody (Cat.-No.: [AP21161PU-N]) in extracts from HeLa cells.