

## Product datasheet for **AP21156PU-N**

### CD55 Rabbit Polyclonal Antibody

#### Product data:

Product Type:	Primary Antibodies
Applications:	WB
Recommended Dilution:	<b>Western blot:</b> 1/500-1/1000.
Reactivity:	Human
Host:	Rabbit
Clonality:	Polyclonal
Specificity:	This antibody detects endogenous levels of CD55 protein. (region surrounding Lys142)
Formulation:	Phosphate buffered saline (PBS), pH~7.2 State: Aff - Purified State: Liquid purified Ig fraction (> 95% by SDS-PAGE) Preservative: 0.05% Sodium Azide
Concentration:	1.0 mg/ml
Purification:	Affinity Chromatography using epitope-specific immunogen
Conjugation:	Unconjugated
Storage:	Store undiluted at 2-8°C for one month or (in aliquots) at -20°C for longer. Avoid repeated freezing and thawing.
Stability:	Shelf life: one year from despatch.
Predicted Protein Size:	~ 41 kDa
Gene Name:	CD55 molecule (Cromer blood group)
Database Link:	<a href="#">Entrez Gene 1604 Human P08174</a>
Background:	Avoidance by host tissues of attack by autologous complement proteins is dependent in part on the activities of membrane regulatory factors. One molecule involved in this control is a 70 kD glycoprotein termed decay-accelerating factor (DAF), or CD55. Interruption by CD55 of the complement sequence at an early step in activation effectively halts progression of the cascade and prevents consequent cell injury. In man, CD55 is expressed on the plasma membrane of all cell types that are in intimate contact with plasma complement proteins.



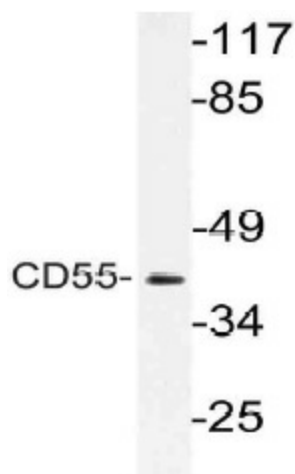
[View online »](#)

Synonyms: CR; CROM; DAF; TC

Protein Families: Druggable Genome

Protein Pathways: Complement and coagulation cascades, Hematopoietic cell lineage, Viral myocarditis

### Product images:



Western blot (WB) analysis of CD55 antibody (Cat.-No.: AP21156PU-N) in extracts from Jurkat cells.