

## Product datasheet for **AP21155PU-S**

### Complement C9 (C9) Rabbit Polyclonal Antibody

#### Product data:

Product Type:	Primary Antibodies
Applications:	WB
Recommended Dilution:	<b>Western blot:</b> 1/500 - 1/1000.
Reactivity:	Human
Host:	Rabbit
Clonality:	Polyclonal
Specificity:	This antibody detects endogenous levels of C9 protein. (region surrounding His216)
Formulation:	Phosphate buffered saline (PBS), pH 7.2. State: Aff - Purified State: Liquid purified Ig fraction Preservative: 0.05% sodium azide
Concentration:	1.0 mg/ml
Purification:	Affinity chromatography (> 95% (by SDS-PAGE)
Conjugation:	Unconjugated
Storage:	Store undiluted at 2-8°C for one month or (in aliquots) at -20°C for longer. Avoid repeated freezing and thawing.
Stability:	Shelf life: one year from despatch.
Predicted Protein Size:	~ 70 kDa
Gene Name:	complement component 9
Database Link:	<a href="#">Entrez Gene 735 Human P02748</a>



[View online »](#)

**Background:**

C9 is synthesised in the liver and monocytes, and is a plasma protein consisting of a single polypeptide chain of molecular weight 71kDa. Normal plasma concentration is 60mg/L. C9 forms part of the membrane attack complex (MAC) the cytolytic terminal complex of the complement pathways. C9 binds to the membrane associated C5b-8, binding of C9 to C5b-8 leads to the circular polymerisation of 12-18 C9 molecules. This is the basis of the hydrophilic, proteinwalled, trans-membrane channel formed by the MAC, which leads to cell lysis and destruction.

**Synonyms:**

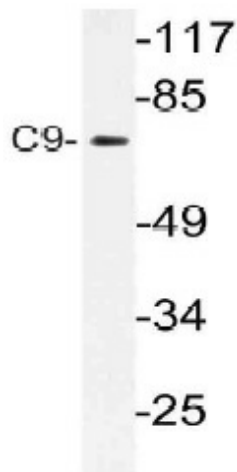
Complement component C9, Complement 9

**Protein Families:**

Druggable Genome

**Protein Pathways:**

Complement and coagulation cascades, Prion diseases, Systemic lupus erythematosus

**Product images:**

Western blot (WB) analysis of C9 antibody (Cat.-No.: [AP21155PU-N]) in extracts from COLO cells.