

## Product datasheet for **AP21155PU-N**

### Complement C9 (C9) Rabbit Polyclonal Antibody

#### Product data:

|                         |   |
|-------------------------|---|
| Product Type:           | Primary Antibodies  |
| Applications:           | WB  |
| Recommended Dilution:   | <b>Western blot:</b> 1/500 - 1/1000.  |
| Reactivity:             | Human   |
| Host:                   | Rabbit  |
| Clonality:              | Polyclonal  |
| Specificity:            | This antibody detects endogenous levels of C9 protein.<br>(region surrounding His216)   |
| Formulation:            | Phosphate buffered saline (PBS), pH 7.2.<br>State: Aff - Purified<br>State: Liquid purified Ig fraction<br>Preservative: 0.05% sodium azide |
| Concentration:          | 1.0 mg/ml   |
| Purification:           | Affinity chromatography (> 95% (by SDS-PAGE)  |
| Conjugation:            | Unconjugated  |
| Storage:                | Store undiluted at 2-8°C for one month or (in aliquots) at -20°C for longer.<br>Avoid repeated freezing and thawing.                        |
| Stability:              | Shelf life: one year from despatch.   |
| Predicted Protein Size: | ~ 70 kDa  |
| Gene Name:              | complement component 9  |
| Database Link:          | <a href="#">Entrez Gene 735 Human P02748</a>  |



[View online »](#)

**Background:**

C9 is synthesised in the liver and monocytes, and is a plasma protein consisting of a single polypeptide chain of molecular weight 71kDa. Normal plasma concentration is 60mg/L. C9 forms part of the membrane attack complex (MAC) the cytolytic terminal complex of the complement pathways. C9 binds to the membrane associated C5b-8, binding of C9 to C5b-8 leads to the circular polymerisation of 12-18 C9 molecules. This is the basis of the hydrophilic, proteinwalled, trans-membrane channel formed by the MAC, which leads to cell lysis and destruction.

**Synonyms:**

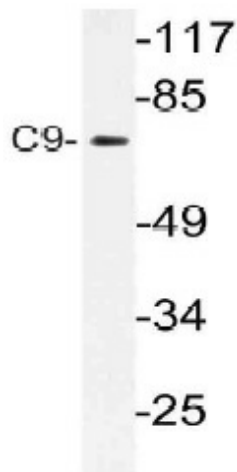
Complement component C9, Complement 9

**Protein Families:**

Druggable Genome

**Protein Pathways:**

Complement and coagulation cascades, Prion diseases, Systemic lupus erythematosus

**Product images:**

Western blot (WB) analysis of C9 antibody (Cat.- No.: AP21155PU-N) in extracts from COLO cells.