

## Product datasheet for **AP21153PU-S**

### C1S Rabbit Polyclonal Antibody

#### Product data:

Product Type:	Primary Antibodies
Applications:	WB
Recommended Dilution:	<b>Western blot:</b> 1/500 - 1/1000.
Reactivity:	Human
Host:	Rabbit
Clonality:	Polyclonal
Specificity:	This antibody detects endogenous levels of C1s protein. (region surrounding Lys583)
Formulation:	Phosphate buffered saline (PBS), pH 7.2. State: Aff - Purified State: Liquid purified Ig fraction Preservative: 0.05% sodium azide
Concentration:	1.0 mg/ml
Purification:	Affinity chromatography (> 95% (by SDS-PAGE)
Conjugation:	Unconjugated
Storage:	Store undiluted at 2-8°C for one month or (in aliquots) at -20°C for longer. Avoid repeated freezing and thawing.
Stability:	Shelf life: one year from despatch.
Predicted Protein Size:	~ 77 kDa
Gene Name:	complement component 1, s subcomponent
Database Link:	<a href="#">Entrez Gene 716 Human P09871</a>



[View online »](#)

**Background:**

C1s proenzyme is a glycoprotein produced primarily by hepatocytes but also by other cells. The proenzyme is produced as a single chain polypeptide of 688 aa. Upon activation the peptide is cleaved between R437 and I438 giving the activated enzyme consisting of two disulfide-linked chains, A chain (52.2 kDa) and B chain (27.7 kDa). The Ca dependent catalytic subunit of the C1 complex (C1q, C1r, C1s) comprises of two C1s and two C1r molecules and this serine protease tetramer is responsible for the initial steps in the classical complement pathway, cleavage of C4 and C2.

**Synonyms:**

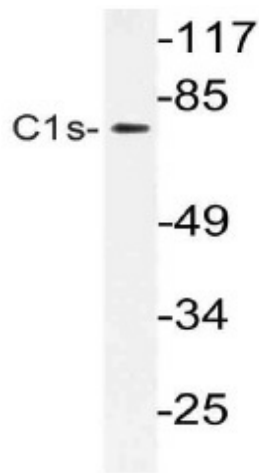
C1 esterase, Complement C1s, Complement 1s

**Protein Families:**

Druggable Genome, Protease

**Protein Pathways:**

Complement and coagulation cascades, Systemic lupus erythematosus

**Product images:**

Western blot (WB) analysis of C1s antibody (Cat.-No.: [AP21153PU-N]) in extracts from Jurkat cells.