

## Product datasheet for **AP21152PU-N**

### C1QC Rabbit Polyclonal Antibody

#### Product data:

Product Type:	Primary Antibodies
Applications:	IHC
Recommended Dilution:	<b>Immunohistochemistry on paraffin sections</b> 1/50 - 1/200.
Reactivity:	Human, Mouse, Rat
Host:	Rabbit
Clonality:	Polyclonal
Specificity:	This antibody detects endogenous levels of C1q-C protein. (region surrounding Gln119)
Formulation:	Phosphate buffered saline (PBS), pH 7.2. State: Aff - Purified State: Liquid purified Ig fraction Preservative: 0.05% sodium azide
Concentration:	1.0 mg/ml
Purification:	Affinity chromatography (> 95% (by SDS-PAGE)
Conjugation:	Unconjugated
Storage:	Store undiluted at 2-8°C for one month or (in aliquots) at -20°C for longer. Avoid repeated freezing and thawing.
Stability:	Shelf life: one year from despatch.
Predicted Protein Size:	~ 30 kDa
Gene Name:	complement component 1, q subcomponent, C chain
Database Link:	<a href="#">Entrez Gene 12262 Mouse</a> <a href="#">Entrez Gene 362634 Rat</a> <a href="#">Entrez Gene 714 Human</a> <a href="#">P02747</a>
Background:	C1q associates with the proenzymes C1r and C1s to yield C1, the first component of the serum complement system. The collagen-like regions of C1q interact with the Ca(2+)-dependent C1r(2)C1s(2) proenzyme complex, and efficient activation of C1 takes place on interaction of the globular heads of C1q with the Fc regions of IgG or IgM antibody present in immune complexes.
Synonyms:	Complement C1qC, Complement 1qA, C1QG

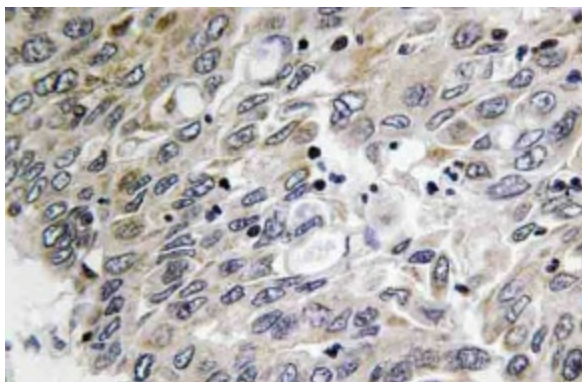


[View online »](#)

**Protein Families:** Secreted Protein

**Protein Pathways:** Complement and coagulation cascades, Prion diseases, Systemic lupus erythematosus

**Product images:**



Immunohistochemistry (IHC) analyzes of C1q-C antibody (Cat.-No.: AP21152PU-N) in paraffin-embedded human lung carcinoma tissue.