

Product datasheet for **AP21150PU-N**

CDw75 (ST6GAL1) Rabbit Polyclonal Antibody

Product data:

| | |
|-------------------------|--------------------------------------------------------------------------------------------------------------------------------------------------|
| Product Type: | Primary Antibodies |
| Applications: | WB |
| Recommended Dilution: | Western blot: 1/500 - 1/1000. |
| Reactivity: | Human, Mouse, Rat |
| Host: | Rabbit |
| Clonality: | Polyclonal |
| Immunogen: | Synthetic peptide, corresponding to amino acids 180-230 of Human CD75. |
| Specificity: | CD75 (R210) pAb detects endogenous levels of CD75 protein. |
| Formulation: | PBS, pH 7.2 State: Aff - Purified State: Liquid purified Ig fraction Preservative: 0.05% sodium azide |
| Concentration: | 1.0 mg/ml |
| Purification: | Affinity chromatography (> 95% (by SDS-PAGE) |
| Conjugation: | Unconjugated |
| Storage: | Store undiluted at 2-8°C for one month or (in aliquots) at -20°C for longer. Avoid repeated freezing and thawing. |
| Stability: | Shelf life: one year from despatch. |
| Predicted Protein Size: | ~ 42 kDa |
| Gene Name: | ST6 beta-galactoside alpha-2,6-sialyltransferase 1 |
| Database Link: | <u>Entrez Gene 20440 Mouse</u> <u>Entrez Gene 25197 Rat</u> <u>Entrez Gene 6480 Human P15907</u> |



[View online »](#)

Background:

The protein encoded by this gene is a type II membrane protein that catalyzes the transfer of sialic acid from CMP sialic acid to galactose-containing substrates. The encoded protein, which is normally found in the Golgi apparatus but which can be proteolytically processed to a soluble form, is involved in the generation of the cell surface carbohydrate determinants and differentiation antigens HB6, CDw75, and CD76. This protein is a member of glycosyltransferase family 29. Three transcript variants encoding two different isoforms have been found for this gene.

Synonyms:

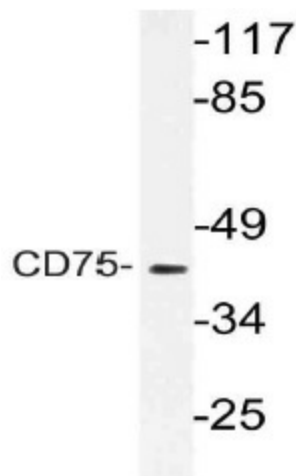
SIAT1, B-Cell marker

Protein Families:

Secreted Protein

Protein Pathways:

Metabolic pathways, N-Glycan biosynthesis

Product images:

Western blot (WB) analysis of CD75 antibody in extracts from RAW264.7 cells.