

## Product datasheet for **AP21149PU-N**

### Claudin 8 (CLDN8) Rabbit Polyclonal Antibody

#### Product data:

Product Type:	Primary Antibodies
Applications:	WB
Recommended Dilution:	<b>Western blot:</b> 1/500 - 1/1000.
Reactivity:	Human
Host:	Rabbit
Clonality:	Polyclonal
Specificity:	This antibody detects endogenous levels of Claudin-8 protein. (region surrounding Ile118)
Formulation:	Phosphate buffered saline (PBS), pH 7.2. State: Aff - Purified State: Liquid purified Ig fraction Preservative: 0.05% sodium azide
Concentration:	1.0 mg/ml
Purification:	Affinity chromatography (> 95% (by SDS-PAGE)
Conjugation:	Unconjugated
Storage:	Store undiluted at 2-8°C for one month or (in aliquots) at -20°C for longer. Avoid repeated freezing and thawing.
Stability:	Shelf life: one year from despatch.
Predicted Protein Size:	~ 28 kDa
Gene Name:	claudin 8
Database Link:	<a href="#">Entrez Gene 9073 Human P56748</a>
Background:	Claudins, which consist of four transmembrane domains and two extracellular loops, make up tight junction strands. Claudin expression is often highly restricted to specific regions of different tissues and may have an important role in transcellular transport through tight junctions. Claudin-8 is a multi-pass membrane protein that belongs to the claudin family. Localized to the caput and the lateral margins of principal cells, claudin-8 plays an important role in tight junction-specific obliteration of the intercellular space.



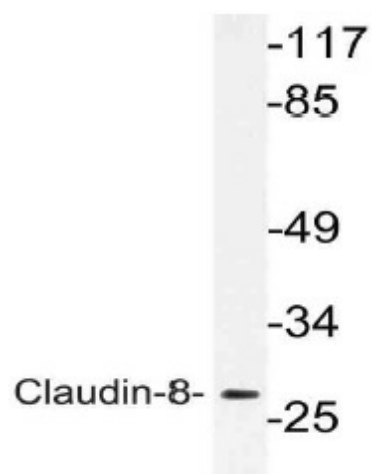
[View online »](#)

Synonyms: UNQ779, PRO1573

Protein Families: Transmembrane

Protein Pathways: Cell adhesion molecules (CAMs), Leukocyte transendothelial migration, Tight junction

### Product images:



Western blot (WB) analysis of Claudin-8 antibody (Cat.-No.: AP21149PU-N) in extracts from Jurkat cells.