

## Product datasheet for **AP21148PU-N**

### Neuroglycan C (CSPG5) Rabbit Polyclonal Antibody

#### Product data:

Product Type:	Primary Antibodies
Applications:	WB
Recommended Dilution:	<b>Western blot:</b> 1/500 - 1/1000.
Reactivity:	Human, Mouse, Rat
Host:	Rabbit
Clonality:	Polyclonal
Specificity:	This antibody detects endogenous levels of Neuroglycan C protein. (region surrounding Trp248)
Formulation:	Phosphate buffered saline (PBS), pH 7.2. State: Aff - Purified State: Liquid purified Ig fraction Preservative: 15 mM sodium azide
Concentration:	1.0 mg/ml
Purification:	Affinity chromatography (> 95% (by SDS-PAGE)
Conjugation:	Unconjugated
Storage:	Store undiluted at 2-8°C for one month or (in aliquots) at -20°C for longer. Avoid repeated freezing and thawing.
Stability:	Shelf life: one year from despatch.
Predicted Protein Size:	~ 60 kDa
Gene Name:	chondroitin sulfate proteoglycan 5
Database Link:	<a href="#">Entrez Gene 29873 Mouse</a> <a href="#">Entrez Gene 50568 Rat</a> <a href="#">Entrez Gene 10675 Human</a> <a href="#">O95196</a>



[View online »](#)

**Background:**

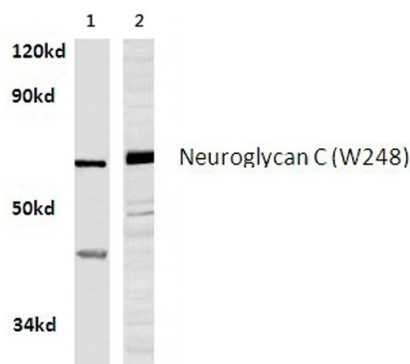
Neuroglycan C is a transmembrane chondroitin sulfate proteoglycan that is exclusively expressed in the central nervous system. NGC gene expression is developmentally regulated being altered by addiction to psychostimulants and by nerve lesion. Its core protein has a particular multidomain structure differing from those of other known proteoglycans, and this protein is modified post-translationally in various ways such as phosphorylation and glycosylation. Neuroglycan C is a novel part-time proteoglycan that changes its structure from a proteoglycan form to a non-proteoglycan form without chondroitin sulfate chains during the development of the cerebellum and retina. Evidence suggests that Neuroglycan C is involved in neuronal circuit formation in the central nervous system.

**Synonyms:**

Chondroitin sulfate proteoglycan 5, CSPG5, CALEB, NGC

**Protein Families:**

ES Cell Differentiation/IPS, Transmembrane

**Product images:**

Lane 1: THP1 whole cell lysate  
Lane 2: Raw264.7 whole cell lysate  
Neuroglycan C (W248) pAb at 1:500 dilution

Western blot (WB) analysis of Neuroglycan C antibody (Cat.-No.: AP21148PU-N) in extracts from THP1 and raw264.7 cells.