

## Product datasheet for **AP21146PU-S**

### CEP290 Rabbit Polyclonal Antibody

#### Product data:

Product Type:	Primary Antibodies
Applications:	WB
Recommended Dilution:	Western Blot: 1/500-1/1000.
Reactivity:	Human, Mouse
Host:	Rabbit
Clonality:	Polyclonal
Specificity:	This antibody detects endogenous levels of CEP290 protein. (region surrounding Phe812)
Formulation:	Phosphate buffered saline (PBS), pH~7.2 State: Aff - Purified State: Liquid purified Ig fraction (> 95% pure by SDS-PAGE). Preservative: 0.05% Sodium Azide
Concentration:	1.0 mg/ml
Purification:	Affinity Chromatography using epitope-specific immunogen.
Conjugation:	Unconjugated
Storage:	Store undiluted at 2-8°C for one month or (in aliquots) at -20°C for longer. Avoid repeated freezing and thawing.
Stability:	Shelf life: one year from despatch.
Predicted Protein Size:	~ 290 kDa
Gene Name:	centrosomal protein 290
Database Link:	<a href="#">Entrez Gene 216274 Mouse</a> <a href="#">Entrez Gene 80184 Human</a> <a href="#">O15078</a>



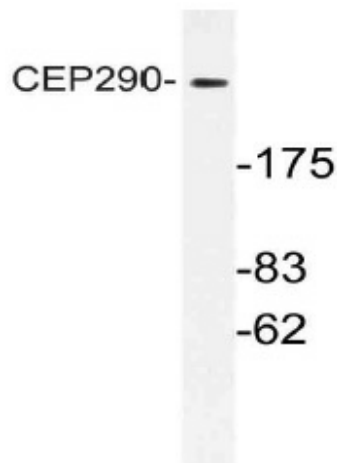
[View online »](#)

**Background:**

CEP290 activates ATF4 mediated transcription and is required for the correct localization of ciliary and phototransduction proteins in retinal photoreceptor cells; may play a role in ciliary transport processes. CEP290 is ubiquitously expressed; strongly in placenta and weakly in brain. There are two named isoforms. Defects in CEP290 are a cause of Joubert syndrome type 5 (JBTS5) [MIM:610188], Senior-Loken syndrome type 6 (SLSN6) [MIM:610189], Leber congenital amaurosis type 10 (LCA10) [MIM:611755] and Meckel syndrome type 4 (MKS4) [MIM:611134]. Antibodies against CEP290 are present in sera from patients with cutaneous T cell lymphomas, but not in the healthy control population.

**Synonyms:**

Centrosomal protein of 290 kDa, Nephrocystin-6, KIAA0373, NPHP6, se2-2, CT87

**Product images:**

Western blot (WB) analysis of CEP290 antibody (Cat.-No.: [AP21146PU-N]) in extracts from K562 cells.