

## Product datasheet for **AP21145PU-N**

### CDC42EP2 Rabbit Polyclonal Antibody

#### Product data:

Product Type:	Primary Antibodies
Applications:	WB
Recommended Dilution:	<b>Western blot:</b> 1/500-1/1000.
Reactivity:	Human, Mouse, Rat
Host:	Rabbit
Clonality:	Polyclonal
Specificity:	This antibody detects endogenous levels of Cdc42EP2 protein. (region surrounding Leu24)
Formulation:	Phosphate buffered saline (PBS), pH~7.2 State: Aff - Purified State: Liquid purified Ig fraction (> 95% pure by SDS-PAGE). Preservative: 15mM Sodium Azide
Concentration:	1.0 mg/ml
Purification:	Affinity Chromatography using epitope-specific immunogen.
Conjugation:	Unconjugated
Storage:	Store undiluted at 2-8°C for one month or (in aliquots) at -20°C for longer. Avoid repeated freezing and thawing.
Stability:	Shelf life: one year from despatch.
Predicted Protein Size:	~ 30 kDa
Gene Name:	CDC42 effector protein 2
Database Link:	<a href="#">Entrez Gene 104252 Mouse</a> <a href="#">Entrez Gene 309175 Rat</a> <a href="#">Entrez Gene 10435 Human</a> <a href="#">O14613</a>



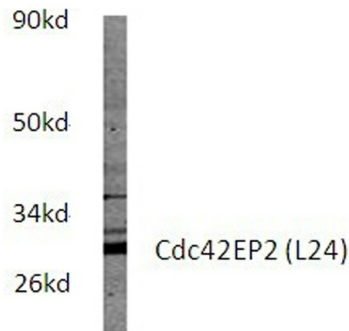
[View online »](#)

**Background:**

Cdc42, a small GTPase, regulates Actin polymerization, elongation of cell shape and cell signaling through interactions with many different downstream effector proteins, most of which contain a Cdc42-binding motif known as a CRIB domain. Cdc42EP2 (Cdc42 effector protein 2), also known as BORG1 or CEP2, is a 210 amino acid intracytoplasmic protein that localizes to both the cytoplasm and the cytoskeleton and contains one CRIB domain. Highly expressed in heart and present at lower levels in liver and pancreas, Cdc42EP2 interacts with Cdc42 and is thought to be involved in the organization of the Actin cytoskeleton and may also influence Actin filament assembly and overall cell shape.

**Synonyms:**

BORG1, CEP2

**Product images:**

Western blot (WB) analysis of Cdc42EP2 antibody (Cat.-No.: AP21145PU-N) in extracts from A549 cells.

A549 whole cell lysate  
Cdc42EP2 (L24) pAb at 1:500 dilution