

## Product datasheet for **AP21143PU-M**

### Lamin A (LMNA) Rabbit Polyclonal Antibody

#### Product data:

Product Type:	Primary Antibodies
Applications:	IHC, WB
Recommended Dilution:	<b>Western blot:</b> 1/500 - 1/1000. <b>Immunohistochemistry on paraffin sections</b> 1/50 - 1/200.
Reactivity:	Human, Mouse, Rat
Host:	Rabbit
Clonality:	Polyclonal
Specificity:	This antibody detects endogenous levels of Lamin A protein. (region surrounding Ser17)
Formulation:	Phosphate buffered saline (PBS), pH 7.2. State: Aff - Purified State: Liquid purified Ig fraction Preservative: 0.05% sodium azide
Concentration:	1.0 mg/ml
Purification:	Affinity chromatography (> 95% (by SDS-PAGE)
Conjugation:	Unconjugated
Storage:	Store undiluted at 2-8°C for one month or (in aliquots) at -20°C for longer. Avoid repeated freezing and thawing.
Stability:	Shelf life: one year from despatch.
Predicted Protein Size:	~ 74 kDa
Gene Name:	lamin A/C
Database Link:	<u><a href="#">Entrez Gene 16905 Mouse</a></u> <u><a href="#">Entrez Gene 60374 Rat</a></u> <u><a href="#">Entrez Gene 4000 Human</a></u> <u><a href="#">P02545</a></u>
Background:	A unique family of cysteine proteases has been described that differs in sequence, structure and substrate specificity from any previously described protease family. This family, termed CED-3/ICE, functions as key components of the apoptotic machinery and act to destroy specific target proteins which are critical to cellular longevity. Nuclear lamins are critical to maintaining the integrity of the nuclear envelope and cellular morphology.



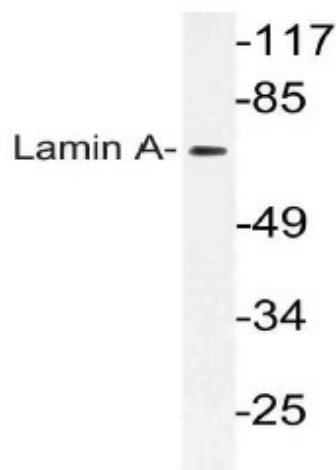
[View online »](#)

**Synonyms:** LMNA, LMN1, 70 kDa Lamin, NY-REN-32, NYREN32, Lamin-A/C, Lamin A, Lamin A + C, Nuclear Envelope Marker

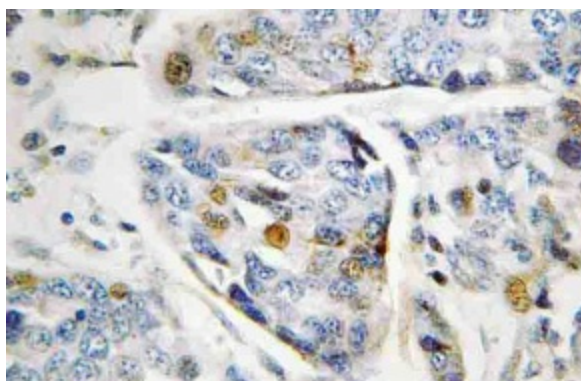
**Protein Families:** Druggable Genome

**Protein Pathways:** Arrhythmogenic right ventricular cardiomyopathy (ARVC), Dilated cardiomyopathy, Hypertrophic cardiomyopathy (HCM)

**Product images:**



Western blot (WB) analysis of Lamin A antibody (Cat.-No.: [AP21143PU-N]) in extracts from HeLa cells.



Immunohistochemistry (IHC) analyzes of Lamin A antibody (Cat.-No.: [AP21143PU-N]) in paraffin-embedded human breast carcinoma tissue.