

Product datasheet for **AP21141PU-N**

TAL1 Rabbit Polyclonal Antibody

Product data:

Product Type:	Primary Antibodies
Applications:	IHC, WB
Recommended Dilution:	Western blot: 1/500-1/1000. Immunohistochemistry on Paraffin Sections: 1/50-1/200.
Reactivity:	Human, Mouse
Host:	Rabbit
Clonality:	Polyclonal
Specificity:	This antibody detects endogenous levels of TAL1 protein. (region surrounding Gly116)
Formulation:	Phosphate buffered saline (PBS), pH~7.2 State: Aff - Purified State: Liquid purified Ig fraction (> 95% pure by SDS-PAGE) Preservative: 0.05% Sodium Azide
Concentration:	1.0 mg/ml
Purification:	Affinity Chromatography using epitope-specific immunogen
Conjugation:	Unconjugated
Storage:	Store undiluted at 2-8°C for one month or (in aliquots) at -20°C for longer. Avoid repeated freezing and thawing.
Stability:	Shelf life: one year from despatch.
Predicted Protein Size:	~45 kDa
Gene Name:	T-cell acute lymphocytic leukemia 1
Database Link:	Entrez Gene 21349 Mouse Entrez Gene 6886 Human P17542



[View online »](#)

Background:

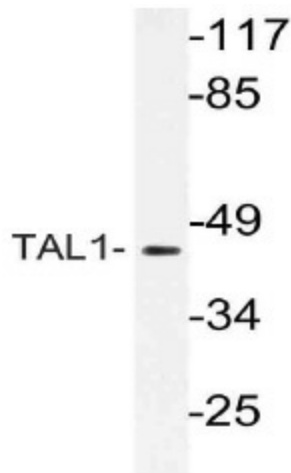
Activation of TAL1 characterizes up to 60% of cases of human T cell acute lymphoblastic leukemia, making it the most frequent gain-of-function mutation observed in this disorder. TAL1 (also designated SCL) is a serine phosphoprotein and basic helix-loop-helix transcription factor known to regulate embryonic hematopoiesis. This transcription factor binds as a heterodimer with E2A and HEB/HTF4 to a nucleotide sequence motif termed the E-box. In addition, leukemogenesis is accelerated dramatically by transgenic co-expression of TAL1 and the catalytic subunit of casein kinase IIalpha, a serine/ threonine protein kinase known to modulate the activity of other bHLH transcription factors.

Synonyms:

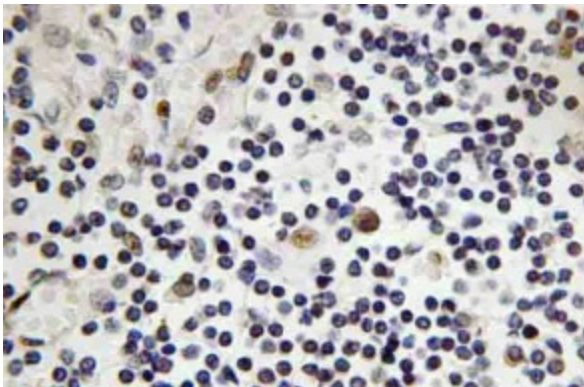
TAL-1, SCL, TCL5

Protein Families:

Adult stem cells, Druggable Genome, ES Cell Differentiation/IPS, Transcription Factors

Product images:

Western blot analysis of TAL1 antibody Cat.-No.- AP21141PU-N in extracts from Jurkat cells.



Immunohistochemistry analysis of TAL1 antibody Cat.-No.- AP21141PU-N in paraffin-embedded human lymph node tissue.