

Product datasheet for **AP21140PU-M**

RAD51 Rabbit Polyclonal Antibody

Product data:

Product Type:	Primary Antibodies
Applications:	IHC, WB
Recommended Dilution:	Western blot: 1/500 - 1/1000. Immunohistochemistry on paraffin sections 1/50 - 1/200.
Reactivity:	Human, Mouse
Host:	Rabbit
Clonality:	Polyclonal
Specificity:	This antibody detects endogenous levels of Rad51 protein. (region surrounding Leu302)
Formulation:	Phosphate buffered saline (PBS), pH 7.2. State: Aff - Purified State: Liquid purified Ig fraction Preservative: 0.05% sodium azide
Concentration:	1.0 mg/ml
Purification:	Affinity chromatography (> 95% (by SDS-PAGE)
Conjugation:	Unconjugated
Storage:	Store undiluted at 2-8°C for one month or (in aliquots) at -20°C for longer. Avoid repeated freezing and thawing.
Stability:	Shelf life: one year from despatch.
Predicted Protein Size:	~ 42 kDa
Gene Name:	RAD51 recombinase
Database Link:	<u>Entrez Gene 19361 Mouse</u> <u>Entrez Gene 5888 Human</u> <u>Q06609</u>

[View online »](#)

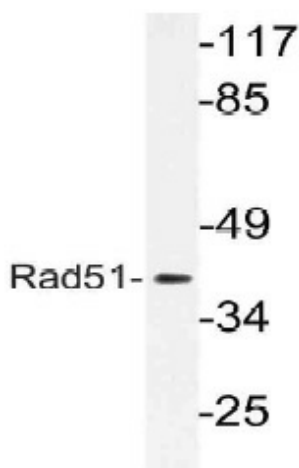
Background: Rad51 is a recombinase that is essential for homologous recombination and double-strand break repair. It binds to single and double-stranded DNA, and has DNA-dependent ATPase activity. Rad51 unwinds duplex DNA and forms helical nucleoprotein filaments in a manner that is controlled through the action of DNA helicases that counteract nucleofilament formation. Rad51 interacts with BRCA1 and BRCA2, and also plays a role in p53-mediated signalling. Interaction of Rad51 with Chk1 kinase may occur in response to Chk1 phosphorylation.

Synonyms: RAD51A, RECA

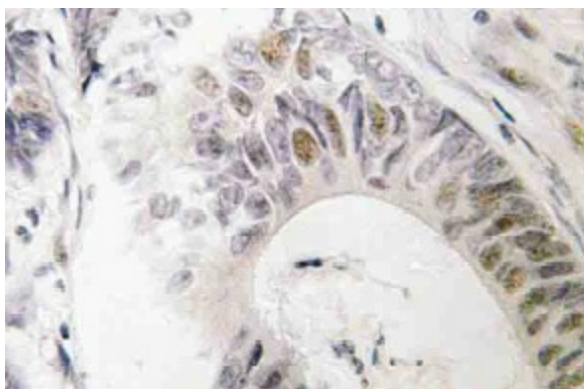
Protein Families: Druggable Genome, Stem cell - Pluripotency, Transcription Factors

Protein Pathways: Homologous recombination, Pancreatic cancer, Pathways in cancer

Product images:



Western blot (WB) analysis of Rad51 antibody (Cat.-No.: [AP21140PU-N]) in extracts from 3T3 cells.



Immunohistochemistry (IHC) analyzes of Rad51 antibody (Cat.-No.: [AP21140PU-N]) in paraffin-embedded human colon carcinoma tissue.