

Product datasheet for **AP21136PU-M**

MEF2C Rabbit Polyclonal Antibody

Product data:

Product Type:	Primary Antibodies
Applications:	IHC, WB
Recommended Dilution:	Western blot: 1/500-1/1000. Immunohistochemistry on Paraffin Sections: 1/50-1/200.
Reactivity:	Human, Mouse
Host:	Rabbit
Clonality:	Polyclonal
Specificity:	This antibody detects endogenous levels of MEF-2C protein. (region surrounding Ile390)
Formulation:	Phosphate buffered saline (PBS), pH~7.2 State: Aff - Purified State: Liquid purified Ig fraction (> 95% pure by SDS-PAGE). Preservative: 0.05% Sodium Azide
Concentration:	1.0 mg/ml
Purification:	Affinity Chromatography using epitope-specific immunogen.
Conjugation:	Unconjugated
Storage:	Store undiluted at 2-8°C for one month or (in aliquots) at -20°C for longer. Avoid repeated freezing and thawing.
Stability:	Shelf life: one year from despatch.
Predicted Protein Size:	~51 kDa
Gene Name:	myocyte enhancer factor 2C
Database Link:	Entrez Gene 17260 Mouse Entrez Gene 4208 Human Q06413
Background:	MEF2C is a transcription activator which binds specifically to the MEF2 element present in the regulatory regions of many muscle-specific genes. This protein controls cardiac morphogenesis and myogenesis, and is also involved in vascular development. It may also be involved in neurogenesis and in the development of cortical architecture.
Synonyms:	Myocyte-specific enhancer factor 2C

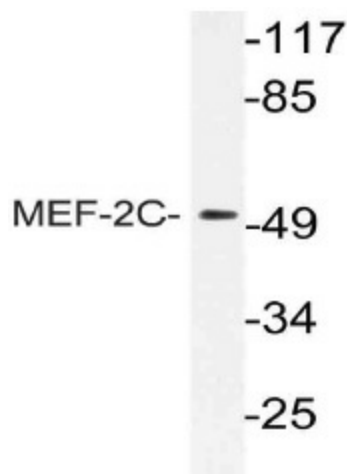


[View online »](#)

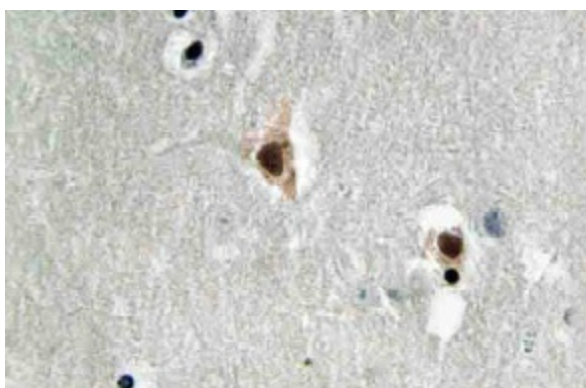
Protein Families: Transcription Factors

Protein Pathways: MAPK signaling pathway

Product images:



Western blot (WB) analysis of MEF-2C antibody (Cat.-No.: [AP21136PU-N]) in extracts from 3T3 cells.



Immunohistochemistry (IHC) analyzes of MEF-2C antibody (Cat.-No.: [AP21136PU-N]) in paraffin-embedded human brain tissue.