

## Product datasheet for **AP21131PU-N**

### GRK2 Rabbit Polyclonal Antibody

#### Product data:

Product Type:	Primary Antibodies
Applications:	IHC, WB
Recommended Dilution:	<b>Western blot:</b> 1/500 - 1/1000. <b>Immunohistochemistry on paraffin sections</b> 1/50 - 1/200.
Reactivity:	Human, Mouse, Rat
Host:	Rabbit
Clonality:	Polyclonal
Specificity:	This antibody detects endogenous levels of GRK 2 protein. (region surrounding Val678)
Formulation:	Phosphate buffered saline (PBS), pH 7.2. State: Aff - Purified State: Liquid purified Ig fraction Preservative: 0.05% sodium azide
Concentration:	1.0 mg/ml
Purification:	Affinity chromatography (> 95% (by SDS-PAGE)
Conjugation:	Unconjugated
Storage:	Store undiluted at 2-8°C for one month or (in aliquots) at -20°C for longer. Avoid repeated freezing and thawing.
Stability:	Shelf life: one year from despatch.
Predicted Protein Size:	~ 80 kDa
Gene Name:	G protein-coupled receptor kinase 2
Database Link:	<a href="#">Entrez Gene 25238 Rat</a> <a href="#">Entrez Gene 110355 Mouse</a> <a href="#">Entrez Gene 156 Human</a> <a href="#">P25098</a>



[View online »](#)

**Background:**

Heterotrimeric G protein-mediated signal transduction is a dynamically regulated process with the intensity of signal decreasing over time despite the continued presence of the agonist. This phenomenon, referred to as agonist-mediated desensitization, involves phosphorylation of the receptor by two classes of enzymes. The first are the second messenger-regulated kinases such as c-AMP dependent protein kinase A and protein kinase C. The second are the G protein-coupled receptor kinases (GRKs). At least seven members of the GRK family have been identified. These include rhodopsin kinase, GRK 1; two forms of  $\beta$ -adrenergic receptor kinase, GRK 2 ( $\beta$ ARK,  $\beta$ ARK1) and GRK 3 ( $\beta$ ARK2); IT-11 (GRK 4); GRK 5, GRK 6 and GRK 7. Phosphorylation of receptors by GRKs appears to be strictly dependent on the receptor being in its agonist-activated state.

**Synonyms:**

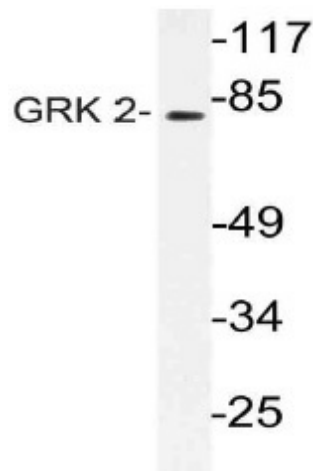
BARK, BARK1, GRK2, Beta-adrenergic receptor kinase 1

**Protein Families:**

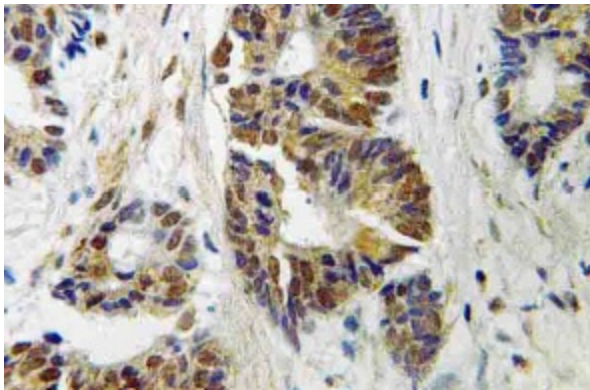
Druggable Genome, Protein Kinase

**Protein Pathways:**

Chemokine signaling pathway, Endocytosis

**Product images:**

Western blot (WB) analysis of GRK 2 antibody (Cat.-No.: AP21131PU-N) in extracts from Jurkat cells.



Immunohistochemistry (IHC) analyzes of GRK 2 antibody (Cat.-No.: AP21131PU-N) in paraffin-embedded human colon carcinoma tissue.