

Product datasheet for **AP21130PU-N**

LRP1 Rabbit Polyclonal Antibody

Product data:

Product Type:	Primary Antibodies
Applications:	WB
Recommended Dilution:	Western blot: 1/500 - 1/1000.
Reactivity:	Human, Mouse
Host:	Rabbit
Clonality:	Polyclonal
Specificity:	This antibody detects endogenous levels of LRP1 protein. (region surrounding Gly4514)
Formulation:	Phosphate buffered saline (PBS), pH 7.2. State: Aff - Purified State: Liquid purified Ig fraction Preservative: 0.05% sodium azide
Concentration:	1.0 mg/ml
Purification:	Affinity chromatography (> 95% (by SDS-PAGE)
Conjugation:	Unconjugated
Storage:	Store undiluted at 2-8°C for one month or (in aliquots) at -20°C for longer. Avoid repeated freezing and thawing.
Stability:	Shelf life: one year from despatch.
Predicted Protein Size:	~ 85 kDa
Gene Name:	LDL receptor related protein 1
Database Link:	Entrez Gene 16971 Mouse Entrez Gene 4035 Human Q07954



[View online »](#)

Background:

Members of the LDL receptor gene family, including LDLR (low density lipoprotein receptor), LRP1 (low density lipoprotein related protein), Megalin (also designated GP330), VLDLR (very low density lipoprotein receptor) and ApoER2 are characterized by a cluster of cysteine-rich class A repeats, epidermal growth factor (EGF)-like repeats, YWTD repeats and an O-linked sugar domain. LRP1, also designated LRP and α -2-Macroglobulin receptor, is an endocytic receptor that mediates the uptake of at least 15 ligands, including α -2-Macroglobulin and apoE. LRP1 is cleaved into a membrane subunit and an extracellular subunit, which remain non-covalently associated. Proper folding and trafficking of LRP1 is facilitated by the receptor-associated protein (RAP), a molecular chaperone. The uptake of all known ligands through LRP1 can be blocked by RAP, which induces a conformational change in the receptor that renders it unable to bind ligands. LRP1, which is expressed in brain, liver and lung, is also implicated in Alzheimer's disease (AD), as the human LRP gene localizes to a potential AD locus on chromosome 12.

Synonyms:

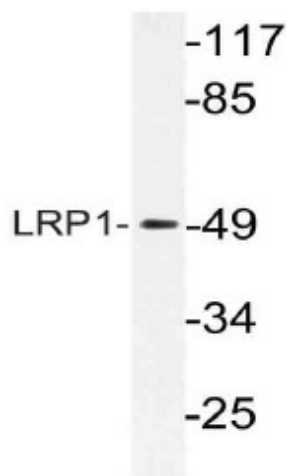
A2MR, APR, APOER

Protein Families:

Druggable Genome, Transmembrane

Protein Pathways:

Alzheimer's disease

Product images:

Western blot (WB) analysis of LRP1 antibody (Cat.-No.: AP21130PU-N) in extracts from HepG2 cells.