

## Product datasheet for **AP21129PU-M**

### LCK Rabbit Polyclonal Antibody

#### Product data:

Product Type:	Primary Antibodies
Applications:	WB
Recommended Dilution:	<b>Western blot:</b> 1/500 - 1/1000.
Reactivity:	Human, Mouse, Rat
Host:	Rabbit
Clonality:	Polyclonal
Specificity:	This detects endogenous levels of Lck protein. (region surrounding Gly534)
Formulation:	Phosphate buffered saline (PBS), pH 7.2. State: Aff - Purified State: Liquid purified Ig fraction Preservative: 0.05% sodium azide
Concentration:	1.0 mg/ml
Purification:	Affinity chromatography (> 95% (by SDS-PAGE)
Conjugation:	Unconjugated
Storage:	Store undiluted at 2-8°C for one month or (in aliquots) at -20°C for longer. Avoid repeated freezing and thawing.
Stability:	Shelf life: one year from despatch.
Predicted Protein Size:	~ 56 kDa
Gene Name:	LCK proto-oncogene, Src family tyrosine kinase
Database Link:	<a href="#">Entrez Gene 16818 Mouse</a> <a href="#">Entrez Gene 313050 Rat</a> <a href="#">Entrez Gene 3932 Human</a> <a href="#">P06239</a>



[View online »](#)

**Background:**

Src is the human homolog of the v-Src gene of the Rous sarcoma virus, also called avian sarcoma virus or ASV. Src was the first proto-oncogenic non-receptor tyrosine kinase characterized in human. By virtue of common structural motifs, the Src family is composed of nine members in vertebrates, including Src, Yes, Fgr, Frk, Fyn, Lyn, Hck, Lck and Blk. Srcfamily kinases transduce signals that are involved in the control of a variety of cellular processes, including proliferation, differentiation, motility, and adhesion. Src-family kinases contain an amino terminal cell membrane anchor followed by an SH3 domain and an SH2 domain that are involved in modular association and activation, respectively. Src-family kinases are normally maintained in an inactive state and can be activated transiently during cellular events such as mitosis.

**Synonyms:**

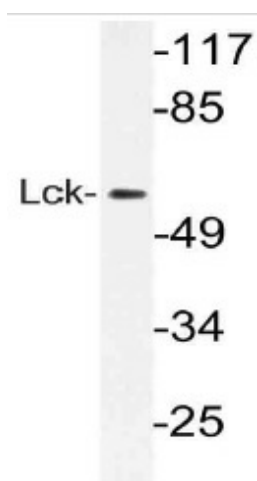
p56-LCK, LSK

**Protein Families:**

Druggable Genome, Protein Kinase, Stem cell - Pluripotency

**Protein Pathways:**

Natural killer cell mediated cytotoxicity, Primary immunodeficiency, T cell receptor signaling pathway

**Product images:**


Western blot (WB) analysis of Lck antibody (Cat.- No.: [AP21129PU-N]) in extracts from Jurkat cells.