

## Product datasheet for **AP21122PU-M**

### PAK3 Rabbit Polyclonal Antibody

#### Product data:

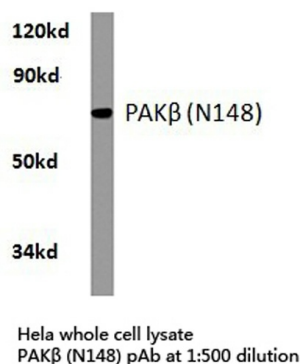
Product Type:	Primary Antibodies
Applications:	IHC, WB
Recommended Dilution:	<b>Western blot:</b> 1/500 - 1/1000. <b>Immunohistochemistry on paraffin sections</b> 1/50 - 1/200.
Reactivity:	Human, Mouse, Rat
Host:	Rabbit
Clonality:	Polyclonal
Specificity:	This antibody detects endogenous levels of PAKbeta protein. (region surrounding asn148)
Formulation:	Phosphate buffered saline (PBS), pH 7.2. State: Aff - Purified State: Liquid purified Ig fraction Preservative: 15mM sodium azide
Concentration:	1.0 mg/ml
Purification:	Affinity chromatography (> 95% (by SDS-PAGE)
Conjugation:	Unconjugated
Storage:	Store undiluted at 2-8°C for one month or (in aliquots) at -20°C for longer. Avoid repeated freezing and thawing.
Stability:	Shelf life: one year from despatch.
Predicted Protein Size:	~ 70 kDa
Gene Name:	p21 (RAC1) activated kinase 3
Database Link:	<u><a href="#">Entrez Gene 18481 Mouse</a></u> <u><a href="#">Entrez Gene 29433 Rat</a></u> <u><a href="#">Entrez Gene 5063 Human</a></u> <u><a href="#">O75914</a></u>



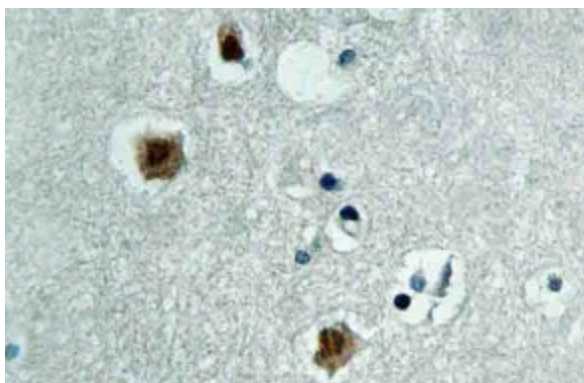
[View online »](#)

<b>Background:</b>	PAK proteins are critical effectors that link Rho GTPases to cytoskeleton reorganization and nuclear signaling. PAK proteins serve as targets for the small GTP binding proteins Cdc42 and RAC and have been implicated in a wide range of biological activities. PAK3 forms an activated complex with GTP-bound RAS-like (P21), CDC2 and RAC1 proteins which then catalyzes a variety of targets. It may be necessary for dendritic development and for the rapid cytoskeletal reorganization in dendritic spines associated with synaptic plasticity. A point mutation in this gene has been linked to nonsyndromic X-linked mental retardation.
<b>Synonyms:</b>	PAK 3, PAK-3, Beta-PAK, PAK beta, p21-activated kinase 3, Oligophrenin-3, OPHN3
<b>Protein Families:</b>	Druggable Genome, Protein Kinase, Stem cell - Pluripotency
<b>Protein Pathways:</b>	Axon guidance, ErbB signaling pathway, Focal adhesion, Regulation of actin cytoskeleton, Renal cell carcinoma, T cell receptor signaling pathway

### Product images:



Western blot (WB) analysis of PAK $\beta$  antibody (Cat.-No.: [AP21122PU-N]) in extracts from hela cells.



Immunohistochemistry (IHC) analyzes of PAKbeta antibody (Cat.-No.: [AP21122PU-N]) in paraffin-embedded human brain tissue.