

Product datasheet for **AP21118PU-M**

MSK1 (RPS6KA5) Rabbit Polyclonal Antibody

Product data:

Product Type:	Primary Antibodies
Applications:	IHC, WB
Recommended Dilution:	Western blot: 1/500 - 1/1000. Immunohistochemistry on paraffin sections 1/50 - 1/200.
Reactivity:	Human, Mouse
Host:	Rabbit
Clonality:	Polyclonal
Specificity:	This antibody detects endogenous levels of MSK1 protein. (region surrounding Asp205)
Formulation:	Phosphate buffered saline (PBS), pH 7.2. State: Aff - Purified State: Liquid purified Ig fraction Preservative: 0.05% sodium azide
Concentration:	1.0 mg/ml
Purification:	Affinity chromatography (> 95% (by SDS-PAGE)
Conjugation:	Unconjugated
Storage:	Store undiluted at 2-8°C for one month or (in aliquots) at -20°C for longer. Avoid repeated freezing and thawing.
Stability:	Shelf life: one year from despatch.
Predicted Protein Size:	~ 90 kDa
Gene Name:	ribosomal protein S6 kinase A5
Database Link:	<u>Entrez Gene 73086 Mouse</u> <u>Entrez Gene 9252 Human</u> <u>O75582</u>



[View online »](#)

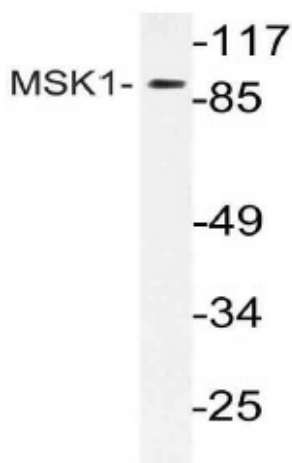
Background: The family of ribosomal S6 kinases (Rsk), designated Rsk-1, Rsk-2 and Rsk-3, have been implicated as important signaling intermediates in response to a broad range of ligand-activated receptor tyrosine kinases. A unique feature common to the three members of the Rsk family is that each possesses two non-identical complete kinase catalytic domains. A related S6 kinase, p70 S6 kinase, functions to phosphorylate the S6 protein on ribosomal 40S subunits. p70 S6 kinase beta shares high sequence homology with p70 S6 kinase, except in the carboxy terminus where it contains a proline-rich domain that may be involved in SH3 domain containing protein interactions. MSK1 (also designated RLPK) is related to Rsk and p70 S6 kinase family members and is thought to be structurally similar to Rsk family members, but it may be regulated by distinct mechanisms.

Synonyms: Ribosomal protein S6 kinase alpha-5, RSKL

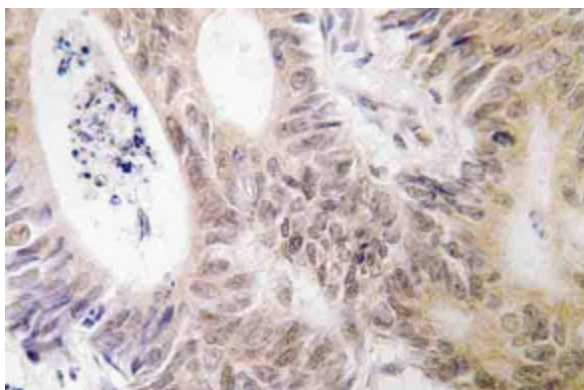
Protein Families: Druggable Genome, Protein Kinase, Transcription Factors

Protein Pathways: Bladder cancer, MAPK signaling pathway, Neurotrophin signaling pathway

Product images:



Western blot (WB) analysis of MSK1 antibody (Cat.-No.: [AP21118PU-N]) in extracts from mouse brain cells.



Immunohistochemistry (IHC) analysis of MSK1 antibody (Cat.-No.: [AP21118PU-N]) in paraffin-embedded human colon carcinoma tissue.