

## Product datasheet for **AP21117PU-N**

### MEK7 (MAP2K7) Rabbit Polyclonal Antibody

#### Product data:

Product Type:	Primary Antibodies
Applications:	WB
Recommended Dilution:	<b>Western blot:</b> 1/500 - 1/1000.
Reactivity:	Human, Mouse, Rat
Host:	Rabbit
Clonality:	Polyclonal
Specificity:	This antibody detects endogenous levels of MEK-7 protein. (region surrounding Ile264)
Formulation:	Phosphate buffered saline (PBS), pH 7.2. State: Aff - Purified State: Liquid purified Ig fraction Preservative: 0.05% sodium azide
Concentration:	1.0 mg/ml
Purification:	Affinity chromatography (> 95% (by SDS-PAGE)
Conjugation:	Unconjugated
Storage:	Store undiluted at 2-8°C for one month or (in aliquots) at -20°C for longer. Avoid repeated freezing and thawing.
Stability:	Shelf life: one year from despatch.
Predicted Protein Size:	~ 48 kDa
Gene Name:	mitogen-activated protein kinase kinase 7
Database Link:	<a href="#">Entrez Gene 26400 Mouse</a> <a href="#">Entrez Gene 363855 Rat</a> <a href="#">Entrez Gene 5609 Human</a> <a href="#">O14733</a>
Background:	Mitogen Activated Protein Kinase Kinase 7 (MEK 7 or MKK 7) is a 38 kDa member of a tyrosine/threonine protein kinase family that activates the c Jun NH2-terminal kinases (JNK), which is part of the inflammation/stress signaling pathway. Phosphorylation of MEK 7 by MEKK 1 on serine 271 and threonine 275 in the catalytic domain activates the protein and enables MEK 7 to phosphorylate JNK.



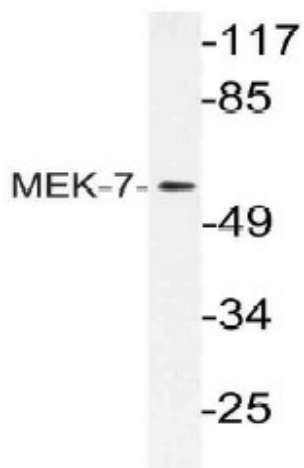
[View online »](#)

**Synonyms:** MAPK/ERK kinase 7, JNK-activating kinase 2, c-Jun N-terminal kinase kinase 2, MAPKK 7, NKK2, MEK7, MKK7, MAP kinase kinase 7

**Protein Families:** Druggable Genome, Protein Kinase

**Protein Pathways:** ErbB signaling pathway, Fc epsilon RI signaling pathway, GnRH signaling pathway, MAPK signaling pathway, Neurotrophin signaling pathway, T cell receptor signaling pathway, Toll-like receptor signaling pathway

### Product images:



Western blot (WB) analysis of MEK-7 antibody (Cat.-No.: AP21117PU-N) in extracts from HeLa cells.