

Product datasheet for **AP21115PU-M**

NR2C2 Rabbit Polyclonal Antibody

Product data:

Product Type:	Primary Antibodies
Applications:	IHC, WB
Recommended Dilution:	Western blot: 1/500 - 1/1000. Immunohistochemistry on paraffin sections 1/50 - 1/200.
Reactivity:	Human, Mouse, Rat
Host:	Rabbit
Clonality:	Polyclonal
Specificity:	This antibody detects endogenous levels of Tak1 protein. (region surrounding Asp181)
Formulation:	Phosphate buffered saline (PBS), pH 7.2. State: Aff - Purified State: Liquid purified Ig fraction Preservative: 0.05% sodium azide
Concentration:	1.0 mg/ml
Purification:	Affinity chromatography (> 95% (by SDS-PAGE)
Conjugation:	Unconjugated
Storage:	Store undiluted at 2-8°C for one month or (in aliquots) at -20°C for longer. Avoid repeated freezing and thawing.
Stability:	Shelf life: one year from despatch.
Predicted Protein Size:	~ 70, 82 kDa
Gene Name:	nuclear receptor subfamily 2 group C member 2
Database Link:	<u>Entrez Gene 22026 Mouse</u> <u>Entrez Gene 50659 Rat</u> <u>Entrez Gene 7182 Human</u> <u>P49116</u>



[View online »](#)

Background:

Several serine/threonine protein kinases have been implicated as intermediates in signal transduction pathways. These include ERK/MAP kinases, ribosomal S6 kinase (Rsk) and Raf-1. Raf-1 is a 74 kDa protein with intrinsic kinase activity towards serine/threonine residues and that is widely expressed in many tissue types and cell lines. Raf-1 activation is dependent on the small molecular weight GTPase Ras, but the means by which this activation occurs is poorly understood. Two proteins putatively involved in this process are Ksr-1 and Tak1. Ksr-1 (kinase suppressor of Ras) is a novel Raf-related protein kinase whose function is required for Ras signal transduction.

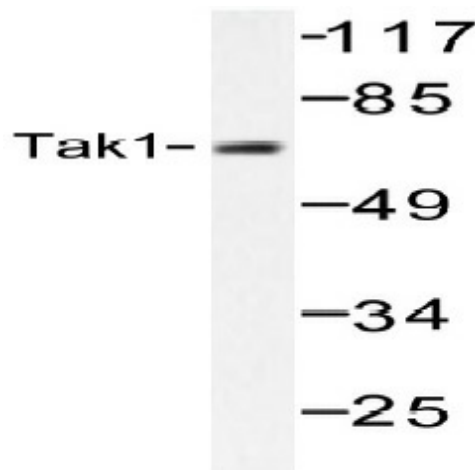
Whether Ksr-1 lies directly downstream of Ras or acts in a parallel pathway is not yet known. Tak1 (TGFbeta-activated kinase) has been shown to participate in the activation of the MAP kinase family in response to TGFbeta stimulation.

Synonyms:

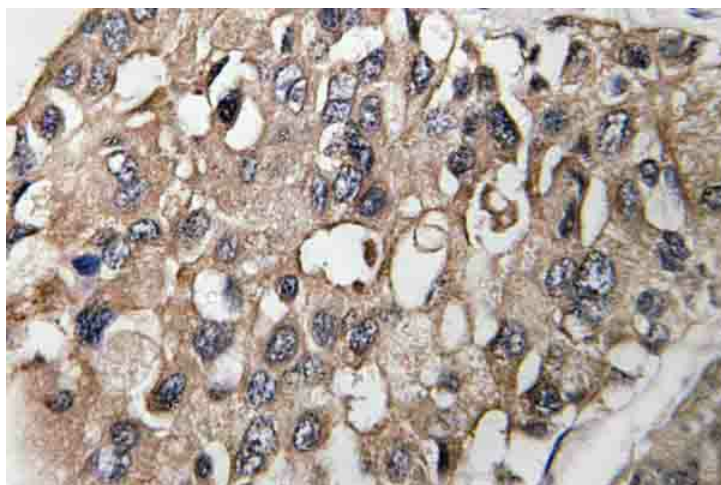
TAK1, TR4

Protein Families:

Druggable Genome, Nuclear Hormone Receptor, Transcription Factors

Product images:


Western blot (WB) analysis of Tak1 antibody (Cat.-No.: [AP21115PU-N]) in extracts from HepG2 cells.



Immunohistochemistry (IHC) analyzes of Tak1 antibody (Cat.: [AP21115PU-N]) in paraffin-embedded human breast carcinoma.