

Product datasheet for **AP21114PU-M**

Insulin Receptor (INSR) Rabbit Polyclonal Antibody

Product data:

Product Type:	Primary Antibodies
Applications:	WB
Recommended Dilution:	Western blot: 1/500 - 1/1000.
Reactivity:	Human, Mouse, Rat
Host:	Rabbit
Clonality:	Polyclonal
Specificity:	This antibody detects endogenous levels of Insulin R protein. (region surrounding Lys1368)
Formulation:	Phosphate buffered saline (PBS), pH 7.2. State: Aff - Purified State: Liquid purified Ig fraction Preservative: 0.05% sodium azide
Concentration:	1.0 mg/ml
Purification:	Affinity chromatography (> 95% (by SDS-PAGE)
Conjugation:	Unconjugated
Storage:	Store undiluted at 2-8°C for one month or (in aliquots) at -20°C for longer. Avoid repeated freezing and thawing.
Stability:	Shelf life: one year from despatch.
Predicted Protein Size:	~ 95, 156 kDa
Gene Name:	insulin receptor
Database Link:	Entrez Gene 3643 Human P06213



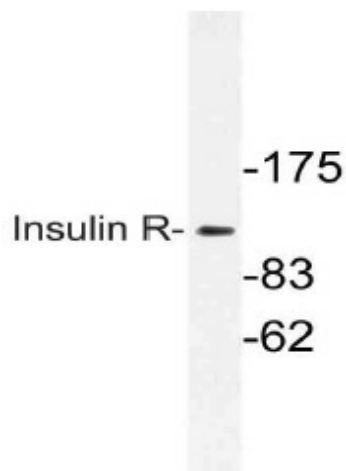
[View online »](#)

Background:

The insulin receptor (IR) is a heterodimeric protein complex that has an intracellular β subunit and an extracellular α subunit, which is disulfide-linked to a transmembrane segment. The insulin ligand binds to the IR and initiates molecular signaling pathways that promote glucose uptake in cells and glycogen synthesis. Insulin binding to IR induces phosphorylation of intracellular tyrosine kinase domains and recruitment of multiple SH2 and SH3 domain-containing intracellular proteins that serve as signaling intermediates for pleiotropic effects of insulin.

Synonyms:

Insulin Receptor

Product images:


Western blot (WB) analysis of Insulin R antibody (Cat.-No.: [AP21114PU-N]) in extracts from HepG2 cells.