

Product datasheet for **AP21113PU-N**

Integrin Linked Kinase (ILK) Rabbit Polyclonal Antibody

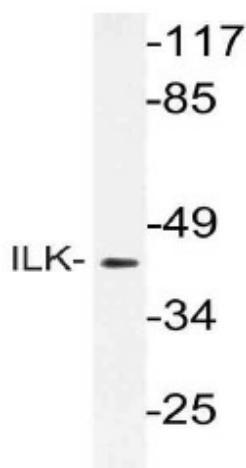
Product data:

Product Type:	Primary Antibodies
Applications:	IHC, WB
Recommended Dilution:	Western blot: 1/500 - 1/1000. Immunohistochemistry on paraffin sections 1/50 - 1/200.
Reactivity:	Human, Mouse, Rat
Host:	Rabbit
Clonality:	Polyclonal
Specificity:	This antibody detects endogenous levels of ILK protein. (region surrounding Pro240)
Formulation:	Phosphate buffered saline (PBS), pH 7.2. State: Aff - Purified State: Liquid purified Ig fraction Preservative: 0.05% sodium azide
Concentration:	1.0 mg/ml
Purification:	Affinity chromatography (> 95% (by SDS-PAGE)
Conjugation:	Unconjugated
Storage:	Store undiluted at 2-8°C for one month or (in aliquots) at -20°C for longer. Avoid repeated freezing and thawing.
Stability:	Shelf life: one year from despatch.
Predicted Protein Size:	~ 51 kDa
Gene Name:	integrin linked kinase
Database Link:	<u>Entrez Gene 16202 Mouse</u> <u>Entrez Gene 170922 Rat</u> <u>Entrez Gene 3611 Human</u> <u>Q13418</u>

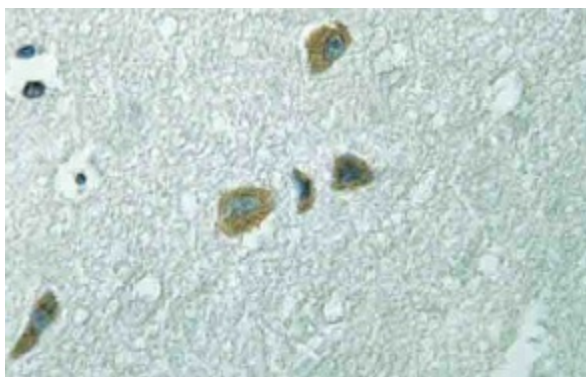


[View online »](#)

Background:	Transduction of extracellular matrix signals through integrins influences intracellular and extracellular functions, and appears to require interaction of integrin cytoplasmic domains with cellular proteins. Integrin linked kinase (ILK), interacts with the cytoplasmic domain of beta 1 Integrin. ILK encodes a predicted 451 amino acid protein, with an apparent molecular weight of 59 kDa. The ILK protein is a serine/threonine protein kinase with 4 ankyrin like repeats. ILK regulates integrin mediated signal transduction.
Synonyms:	ILK-1, ILK-2, p59ILK, ILK, ILK1, ILK2
Protein Families:	Druggable Genome, Protein Kinase
Protein Pathways:	Endometrial cancer, Focal adhesion, PPAR signaling pathway

Product images:

Western blot (WB) analysis of ILK antibody (Cat.-No.: AP21113PU-N) in extracts from rat liver cells.



Immunohistochemistry (IHC) analyzes of ILK antibody (Cat.-No.: AP21113PU-N) in paraffin-embedded human brain tissue.