

Product datasheet for **AP21112PU-M**

Eph receptor B1 (EPHB1) (+EphB2/3/4) Rabbit Polyclonal Antibody

Product data:

Product Type:	Primary Antibodies
Applications:	WB
Recommended Dilution:	Western blot: 1/500 - 1/1000.
Reactivity:	Human, Mouse
Host:	Rabbit
Clonality:	Polyclonal
Specificity:	This antibody detects endogenous levels of EphB1/2/3/4 protein. (region surrounding Tyr594)
Formulation:	Phosphate buffered saline (PBS), pH 7.2. State: Aff - Purified State: Liquid purified Ig fraction Preservative: 0.05% sodium azide
Concentration:	1.0 mg/ml
Purification:	Affinity chromatography (> 95% (by SDS-PAGE)
Conjugation:	Unconjugated
Storage:	Store undiluted at 2-8°C for one month or (in aliquots) at -20°C for longer. Avoid repeated freezing and thawing.
Stability:	Shelf life: one year from despatch.
Predicted Protein Size:	~ 118 kDa
Gene Name:	EPH receptor B1
Database Link:	Entrez Gene 270190 Mouse Entrez Gene 2047 Human P54762



[View online »](#)

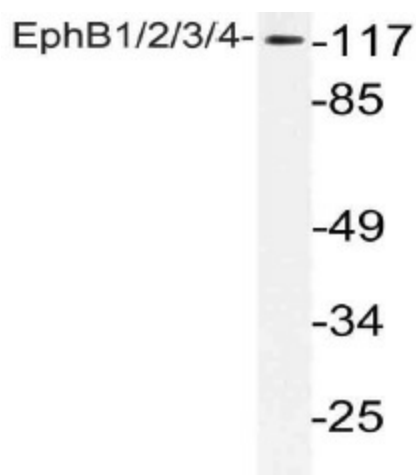
Background: Ephrin receptors bind members of the ephrin ligand family. They are divided into 2 groups based on the similarity of their extracellular domain sequences and their affinities for binding ephrin-A and ephrin-B ligands. They make up the largest subgroup of the receptor tyrosine kinase (RTK) family. Eph receptor B1 (EphB1) and Eph receptor B2 (EphB2) are receptors for ephrin-B family members. Developing and adult neural tissue express nearly all of the Ephrin receptors and ephrin ligands. Ephrins and ephrin receptors also play a significant role in angiogenesis. EphB2 acts as a tumor suppressor.

Synonyms: EPHT2, NET, HEK6, ELK, EPH2, Ephrin type-B receptor 1

Protein Families: Druggable Genome, Protein Kinase, Transmembrane

Protein Pathways: Axon guidance

Product images:



Western blot (WB) analysis of EphB1/2/3/4 antibody (Cat.-No.: [AP21112PU-N]) in extracts from 3T3 cells.