

## Product datasheet for **AP21103PU-N**

### Ezrin (EZR) Rabbit Polyclonal Antibody

#### Product data:

Product Type:	Primary Antibodies
Applications:	WB
Recommended Dilution:	<b>Western blot:</b> 1/500-1/1000.
Reactivity:	Human, Mouse, Rat
Host:	Rabbit
Clonality:	Polyclonal
Specificity:	This antibody detects endogenous levels of Ezrin protein. (region surrounding Pro475)
Formulation:	Phosphate buffered saline (PBS), pH 7.2 State: Aff - Purified State: Liquid purified Ig fraction (> 95% pue by SDS-PAGE) Preservative: 15mM Sodium Azide
Concentration:	1.0 mg/ml
Purification:	Affinity Chromatography using epitope-specific immunogen
Conjugation:	Unconjugated
Storage:	Store undiluted at 2-8°C for one month or (in aliquots) at -20°C for longer. Avoid repeated freezing and thawing.
Stability:	Shelf life: one year from despatch.
Predicted Protein Size:	~ 68, 81 kDa
Gene Name:	ezrin
Database Link:	<a href="#">Entrez Gene 22350 Mouse</a> <a href="#">Entrez Gene 54319 Rat</a> <a href="#">Entrez Gene 7430 Human</a> <a href="#">P15311</a>



[View online »](#)

**Background:**

Ezrin, Moesin and Radixin belong to a family of highly homologous Actin-associated proteins that are localized just beneath the plasma membrane. The proteins are believed to be involved in the mediation of interactions between cytoskeletal and membrane proteins. Ezrin serves as a major cytoplasmic substrate of various protein-tyrosine kinases, including the epidermal growth factor receptor. Ezrin has also been identified as a cAMP-dependent protein kinase (A-kinase) anchoring protein and designated AKAP78. Moesin and Radixin share over 70% homology with Ezrin and are coexpressed within various cell types. Despite the high degree of homology, the three proteins exhibit a distinct receptorspecific pattern of phosphorylation.

**Synonyms:**

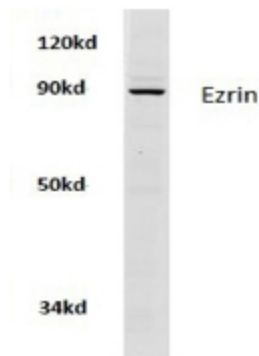
p81, Cytovillin, Villin-2, EZR, VIL2

**Protein Families:**

Druggable Genome

**Protein Pathways:**

Leukocyte transendothelial migration, Pathogenic Escherichia coli infection, Regulation of actin cytoskeleton

**Product images:**

Western blot analysis of Ezrin Antibody (Cat.-No AP21103PU-N) in extracts from hela cells at 1/500 dilution.