

Product datasheet for **AP21093PU-N**

L1CAM Rabbit Polyclonal Antibody

Product data:

Product Type:	Primary Antibodies
Applications:	IF, IHC, WB
Recommended Dilution:	Western blot: 1/500-1/1000. Immunofluorescence: 1/50-1/200. Immunohistochemistry on Paraffin Sections: 1/50-1/200.
Reactivity:	Human, Mouse, Rat
Host:	Rabbit
Clonality:	Polyclonal
Immunogen:	Synthetic peptide corresponding to amino acids 1150-1200 of Human NCAM-L1.
Specificity:	This antibody detects endogenous levels of NCAM-L1 protein. AP21093PU-N binds to the cytoplasmic region of NCAM-L1.
Formulation:	Phosphate Buffered Saline (PBS), pH~7.2 State: Aff - Purified State: Liquid purified Ig fraction (> 95% by SDS-PAGE) Preservative: 15mM Sodium Azide
Concentration:	1.0 mg/ml
Purification:	Affinity Chromatography using epitope-specific immunogen
Conjugation:	Unconjugated
Storage:	Store undiluted at 2-8°C for one month or (in aliquots) at -20°C for longer. Avoid repeated freezing and thawing.
Stability:	Shelf life: one year from despatch.
Predicted Protein Size:	~140 kDa
Gene Name:	L1 cell adhesion molecule
Database Link:	Entrez Gene 16728 Mouse Entrez Gene 50687 Rat Entrez Gene 3897 Human P32004



[View online »](#)

Background:

The L1CAM gene, which is located in Xq28, is involved in three distinct conditions: 1) HSAS (hydrocephalus-stenosis of the aqueduct of Sylvius); 2) MASA (mental retardation, aphasia, shuffling gait, adductus thumbs); and 3) SPG1 (spastic paraplegia). The L1, neural cell adhesion molecule (L1CAM) also plays an important role in axon growth, fasciculation, neural migration and in mediating neuronal differentiation. Expression of L1 protein is restricted to tissues arising from neuroectoderm.

Synonyms:

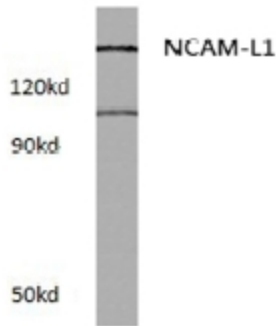
N-CAM L1, CAML1, MIC5

Protein Families:

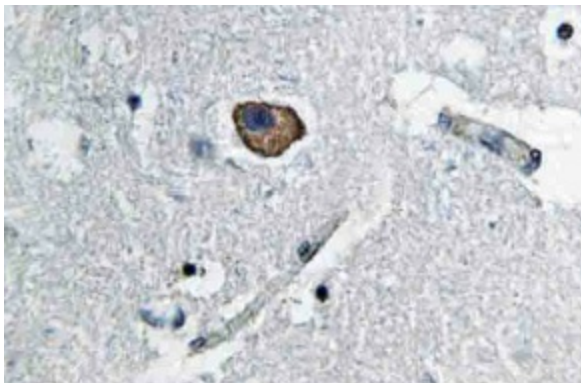
Druggable Genome, ES Cell Differentiation/IPS, Transmembrane

Protein Pathways:

Axon guidance, Cell adhesion molecules (CAMs)

Product images:


Western blot (WB) analysis of CD171 / L1CAM Antibody at 1/500 dilution in extracts from Raw264.7 cells treated with LPS.



Immunohistochemistry analysis of CD171 / L1CAM Antibody in paraffin-embedded human brain tissue.