

## Product datasheet for **AP21090PU-M**

### MAPKAP Kinase 2 (MAPKAPK2) Rabbit Polyclonal Antibody

#### Product data:

Product Type:	Primary Antibodies
Applications:	IHC, WB
Recommended Dilution:	<b>Western blot:</b> 1/500 - 1/1000. <b>Immunohistochemistry:</b> 1/50 - 1/200.
Reactivity:	Human, Mouse, Rat
Host:	Rabbit
Clonality:	Polyclonal
Specificity:	This antibody detects endogenous levels of MAPKAPK-2 protein. (region surrounding asn218)
Formulation:	Phosphate buffered saline (PBS), pH 7.2. State: Aff - Purified State: Liquid purified Ig fraction Preservative: 0.05% sodium azide
Concentration:	1.0 mg/ml
Purification:	Affinity chromatography (> 95% (by SDS-PAGE)
Conjugation:	Unconjugated
Storage:	Store undiluted at 2-8°C for one month or (in aliquots) at -20°C for longer. Avoid repeated freezing and thawing.
Stability:	Shelf life: one year from despatch.
Predicted Protein Size:	~ 46 kDa
Gene Name:	mitogen-activated protein kinase-activated protein kinase 2
Database Link:	<u><a href="#">Entrez Gene 17164 Mouse</a></u> <u><a href="#">Entrez Gene 289014 Rat</a></u> <u><a href="#">Entrez Gene 9261 Human</a></u> <u><a href="#">P49137</a></u>



[View online »](#)

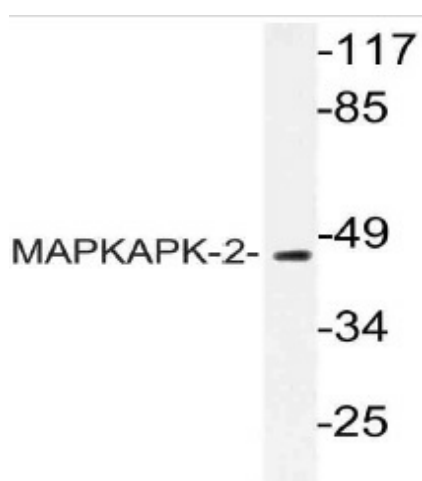
**Background:** MAP kinase activated protein kinase 2 (MAPKAP Kinase 2), also known as p45 hsp27 kinase, is a 45-54 kDa serine/threonine protein kinase that contains a proline rich sequence and two putative SH3 binding sites. MAPKAP Kinase 2 is activated in response to stress, IL1 and TNF, possibly catalyzed by p38/Hog dependent phosphorylation. One of the major substrates of MAPKAP Kinase 2 is hsp27, which stimulates actin polymerization in order to facilitate recovery from destruction of cytoskeleton during cellular stresses. MAPKAP2 is implicated in several disorders including ischemic brain injury and heart failure and has been shown to be important in regulating stress resistance and the production of TNF alpha.

**Synonyms:** MAPK-activated protein kinase 2, MAPKAP kinase 2, MAPKAPK-2, MK2, MAPKAPK2

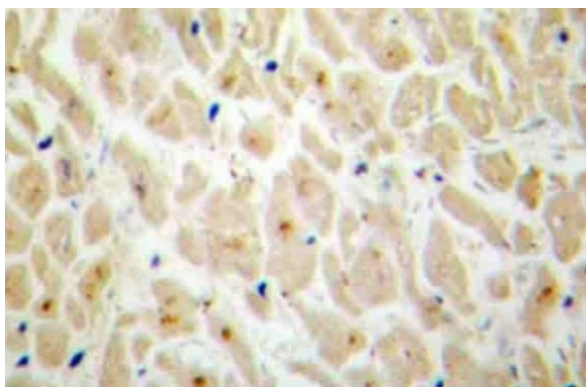
**Protein Families:** Druggable Genome, Protein Kinase

**Protein Pathways:** MAPK signaling pathway, Neurotrophin signaling pathway, VEGF signaling pathway

**Product images:**



Western blot (WB) analysis of MAPKAPK-2 antibody (Cat.-No.: [AP21090PU-N]) in extracts from HUVEC cells.



Immunohistochemistry (IHC) analyzes of MAPKAPK-2 antibody (Cat.-No.: [AP21090PU-N]) in paraffin-embedded human heart tissue.