

Product datasheet for **AP21089PU-N**

IKB beta (NFKBIB) Rabbit Polyclonal Antibody

Product data:

Product Type:	Primary Antibodies
Applications:	WB
Recommended Dilution:	Western blot: 1/500 - 1/1000.
Reactivity:	Human
Host:	Rabbit
Clonality:	Polyclonal
Specificity:	This antibody detects endogenous levels of IkbpaB-beta protein. (region surrounding Ala13)
Formulation:	Phosphate buffered saline (PBS), pH 7.2 State: Aff - Purified State: Liquid purified Ig fraction Preservative: 0.05% sodium azide
Concentration:	1.0 mg/ml
Purification:	Affinity chromatography (> 95% (by SDS-PAGE)
Conjugation:	Unconjugated
Storage:	Store undiluted at 2-8°C for one month or (in aliquots) at -20°C for longer. Avoid repeated freezing and thawing.
Stability:	Shelf life: one year from despatch.
Predicted Protein Size:	~ 37 kDa
Gene Name:	NFKB inhibitor beta
Database Link:	Entrez Gene 4793 Human Q15653



[View online »](#)

Background:

Three major forms of I κ B-like molecules have been identified and each is characterized by multiple copies of ankyrin repeats. I κ B α and I κ B β appear to be the major regulatory forms of I κ B in most cells. These proteins interact with p65 or c-Rel containing forms of NF κ B and block nuclear import by masking the nuclear localization sequences of NF κ B. The activation of NF κ B involves the inducible phosphorylation and subsequent degradation of I κ B. Immunoblotting easily detects the hyper-phosphorylated forms of I κ B α , but not phosphorylated I κ B β .

Synonyms:

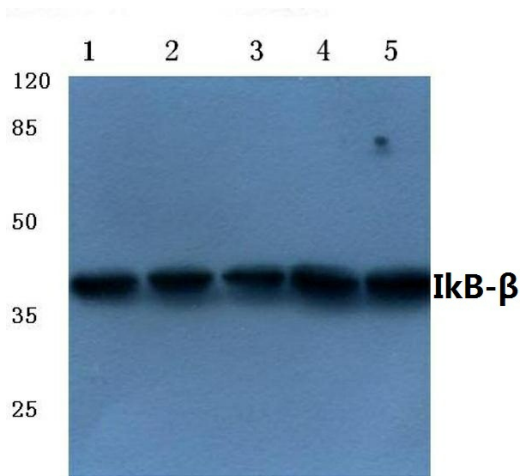
I-kappa-B-beta, TRIP9, I κ B-B, I κ B-beta, I κ B β , TR-interacting protein 9

Protein Families:

Stem cell - Pluripotency, Transcription Factors

Protein Pathways:

Adipocytokine signaling pathway, B cell receptor signaling pathway, Chemokine signaling pathway, Cytosolic DNA-sensing pathway, Neurotrophin signaling pathway, NOD-like receptor signaling pathway, RIG-I-like receptor signaling pathway, T cell receptor signaling pathway

Product images:


Western blot (WB) analysis of I κ B- β antibody (Cat.-No.: AP21089PU-N) at 1/500 dilution
 Lane 1: HeLa whole cell lysate treated with H₂O₂
 Lane 2: HEK293T whole cell lysate treated with LPS
 Lane 3: Mouse liver tissue lysate
 Lane 4: Mouse kidney tissue lysate
 Lane 5: Rat kidney tissue lysate