

Product datasheet for **AP21086PU-N**

SMAD1 Rabbit Polyclonal Antibody

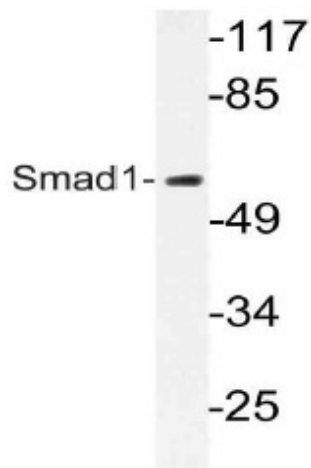
Product data:

Product Type:	Primary Antibodies
Applications:	IHC, WB
Recommended Dilution:	Western blot: 1/500-1/1000. Immunohistochemistry on Paraffin Sections: 1/50-1/200.
Reactivity:	Human, Mouse, Rat
Host:	Rabbit
Clonality:	Polyclonal
Immunogen:	Synthetic peptide, corresponding to amino acids 424-478 of Human SMAD1.
Specificity:	This antibody detects endogenous levels of Smad1 protein. (region surrounding Pro457)
Formulation:	Phosphate buffered saline (PBS), pH~7.2 State: Aff - Purified State: Liquid purified Ig fraction (> 95% pure by SDS-PAGE) Preservative: 0.05% Sodium Azide
Concentration:	1.0 mg/ml
Purification:	Affinity Chromatography using epitope-specific immunogen
Conjugation:	Unconjugated
Storage:	Store undiluted at 2-8°C for one month or (in aliquots) at -20°C for longer. Avoid repeated freezing and thawing.
Stability:	Shelf life: one year from despatch.
Predicted Protein Size:	~ 60 kDa
Gene Name:	SMAD family member 1
Database Link:	Entrez Gene 17125 Mouse Entrez Gene 25671 Rat Entrez Gene 4086 Human Q15797

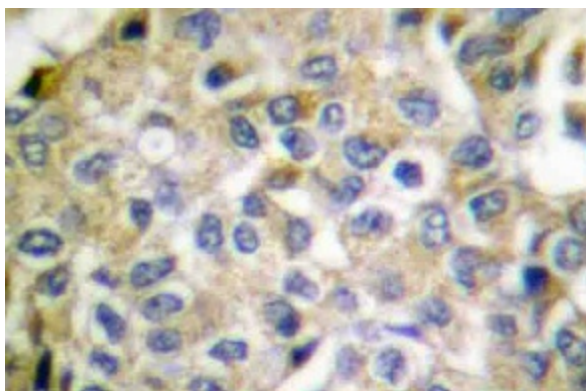


[View online »](#)

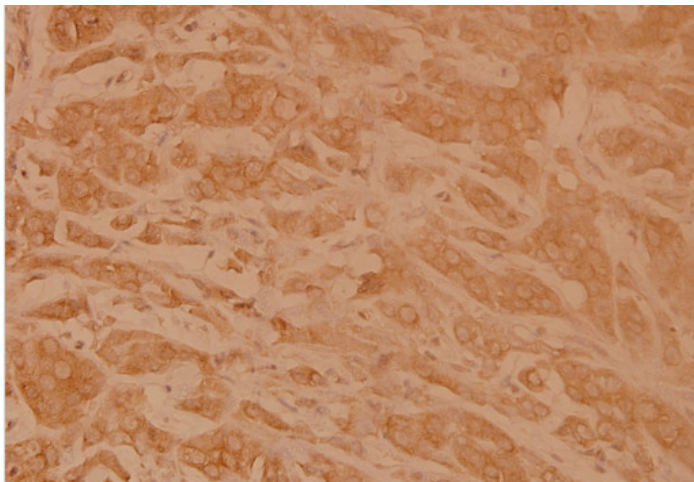
- Background:** Smad proteins, the mammalian homologs of the Drosophila Mothers against dpp (Mad) have been implicated as downstream effectors of TGFbeta/BMP signaling. Smad1 (also designated Madr1 or JV4-1), Smad5 and mammalian Smad8 (also designated Smad9 or MadH6) are effectors of BMP2 and BMP4 function while Smad2 (also designated Madr2 or JV18-1) and Smad3 are involved in TGFbeta and activinmediatd growth modulation. Smad4 (also designated DPC4) has been shown to mediate all of the above activities through interaction with various Smad family members. Smad6 and Smad7 regulate the response to activin/TGFbeta signaling by interfering with TGFbeta-mediated phosphorylation of other Smad family members.
- Synonyms:** SMAD family member 1, SMAD-1, SMAD 1, MADH1, MAD homolog 1, MADR1, Mad-related protein 1, BSP1, BSP-1, JV4-1
- Protein Families:** Cancer stem cells, Druggable Genome, ES Cell Differentiation/IPS, Stem cell relevant signaling - JAK/STAT signaling pathway, Stem cell relevant signaling - TGFb/BMP signaling pathway, Transcription Factors
- Protein Pathways:** TGF-beta signaling pathway

Product images:

Western blot (WB) analysis of SMAD1 antibody in extracts from COS7 cells.



Immunohistochemistry (IHC) analysis of SMAD1 antibody in paraffin-embedded human breast carcinoma tissue at 1/100 dilution.



Immunohistochemistry (IHC) analysis of SMAD1 antibody in paraffin-embedded human breast carcinoma tissue.